



Travel during Covid-19

Tracking research - wave 42

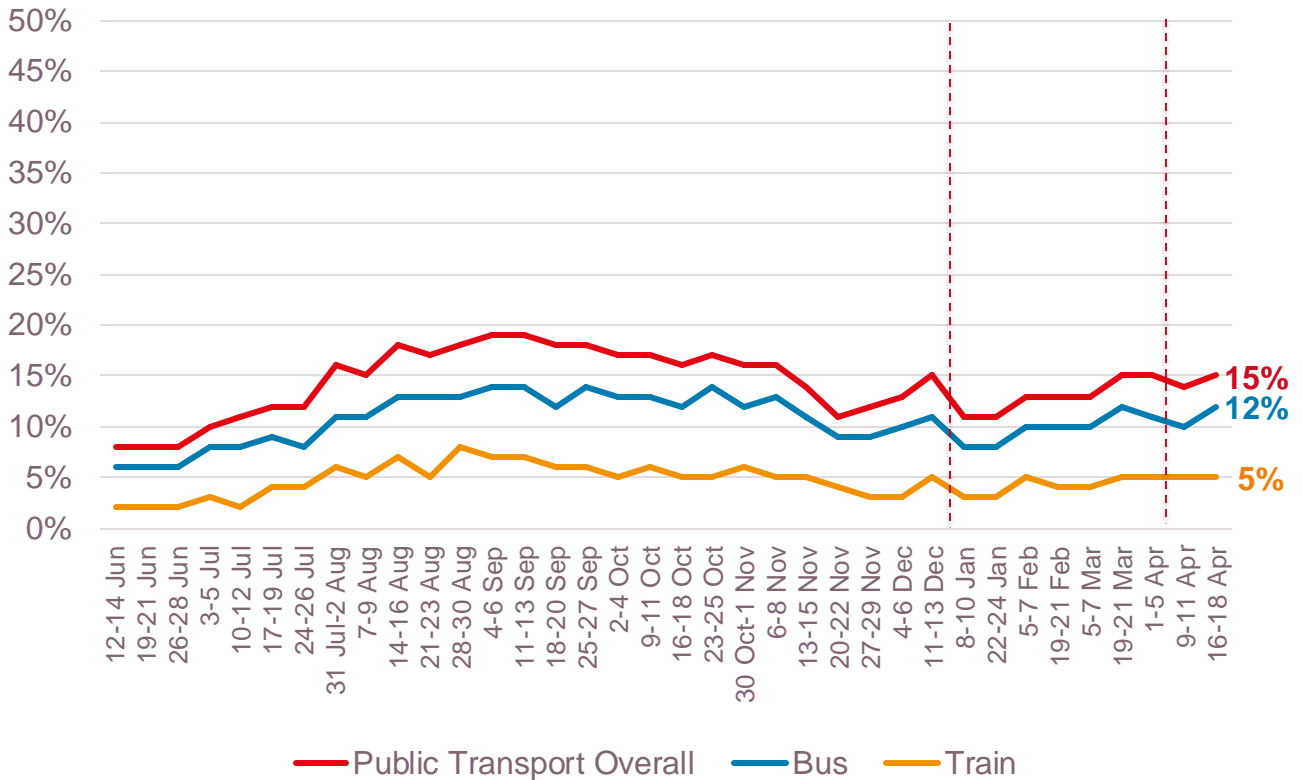
23 April 2021

Travel during Covid-19: omnibus wave 42

The proportion of people using public transport has increased slightly

Use of public transport in last seven days – Great Britain

Trend - last 36 waves

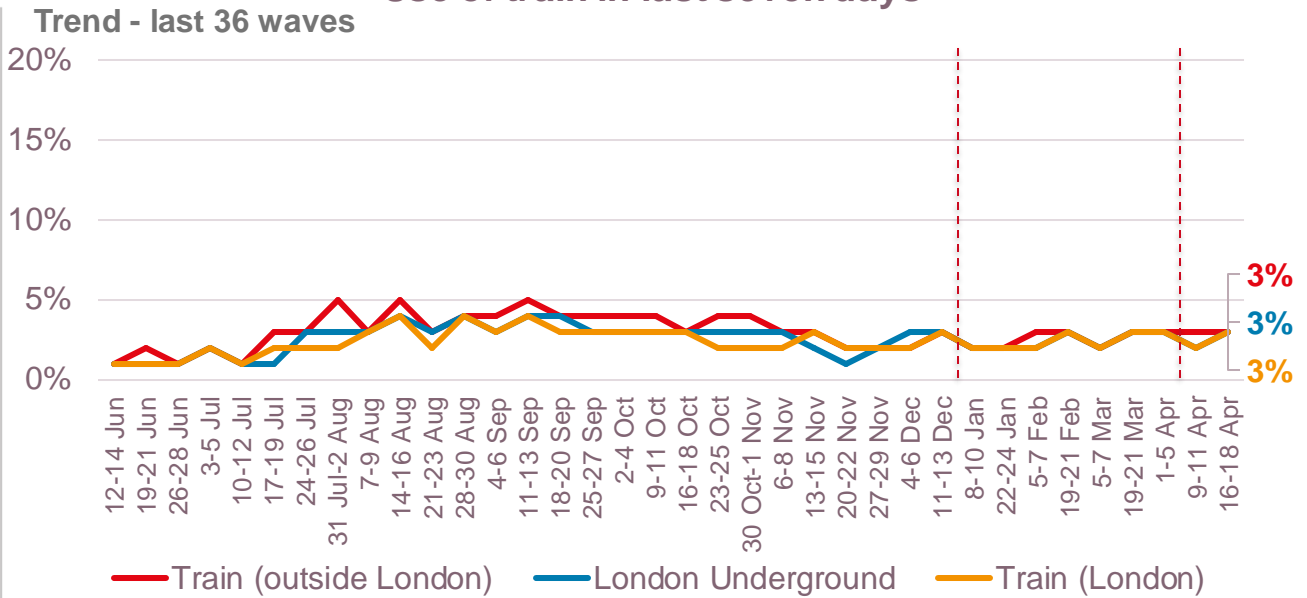


----- Changed from 'last 7 days' to 'last two weeks' between week 34 (8-10 Jan) and week 40 (1-5 April)

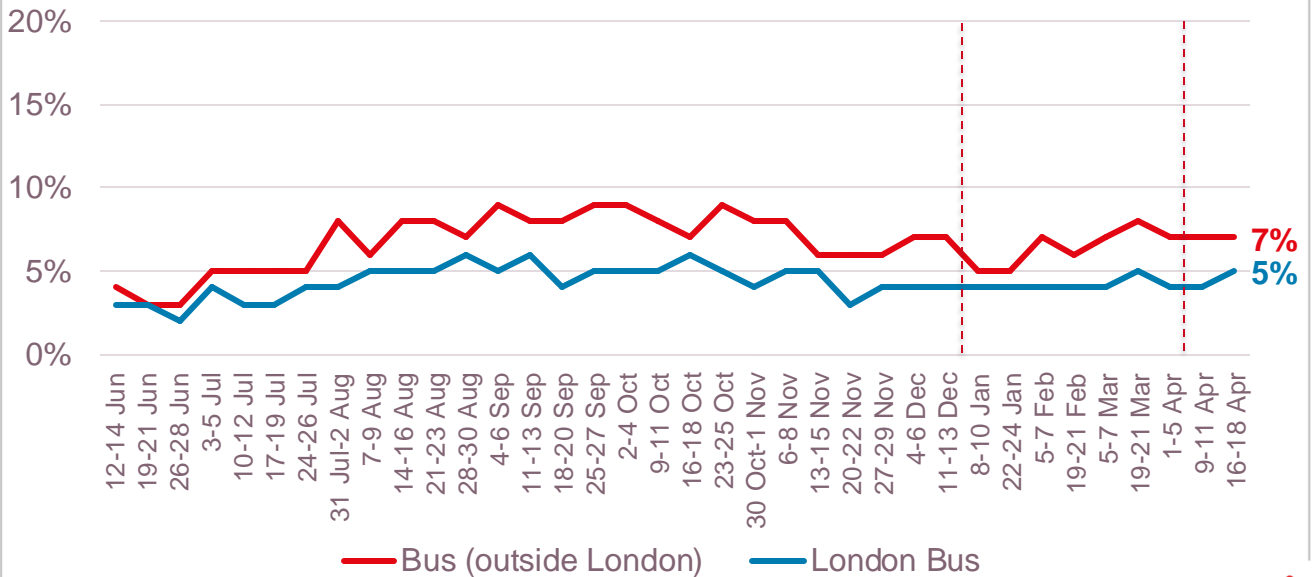
Travel during Covid-19: omnibus wave 42

There has been a small increase in the proportions who have used trains and buses

Use of train in last seven days



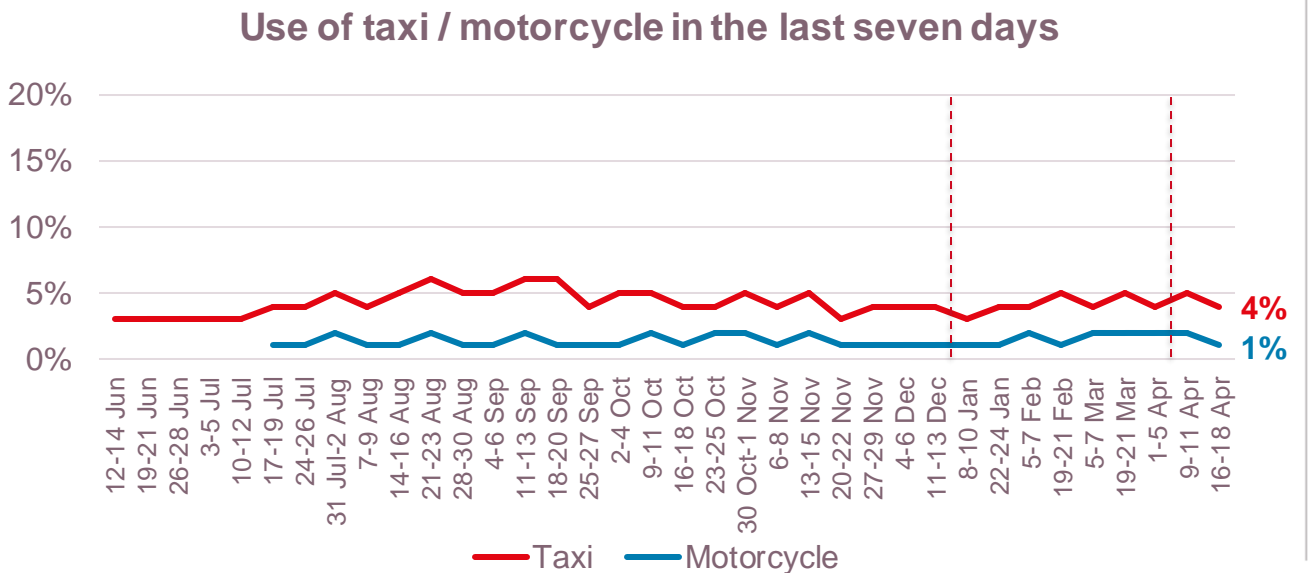
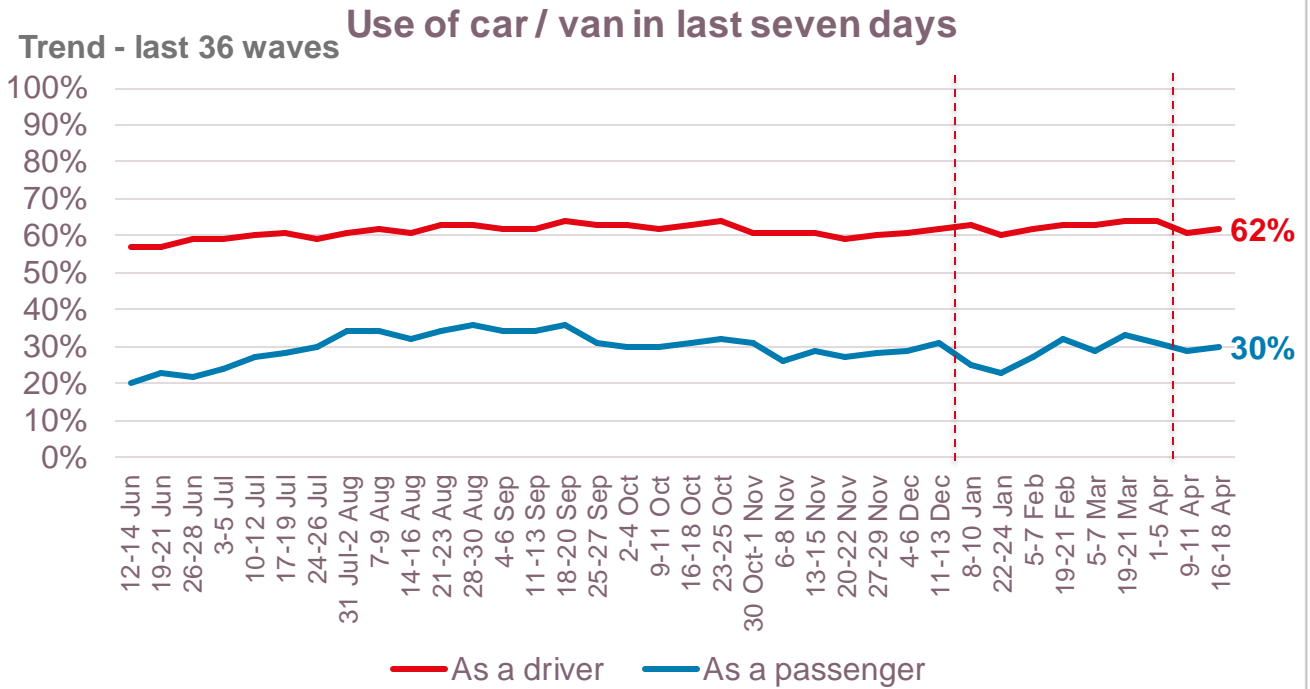
Use of bus in last seven days



--- Changed from 'last 7 days' to 'last two weeks' between week 34 (8-10 Jan) and week 40 (1-5 April)

Travel during Covid-19: omnibus wave 42

Road use is largely consistent



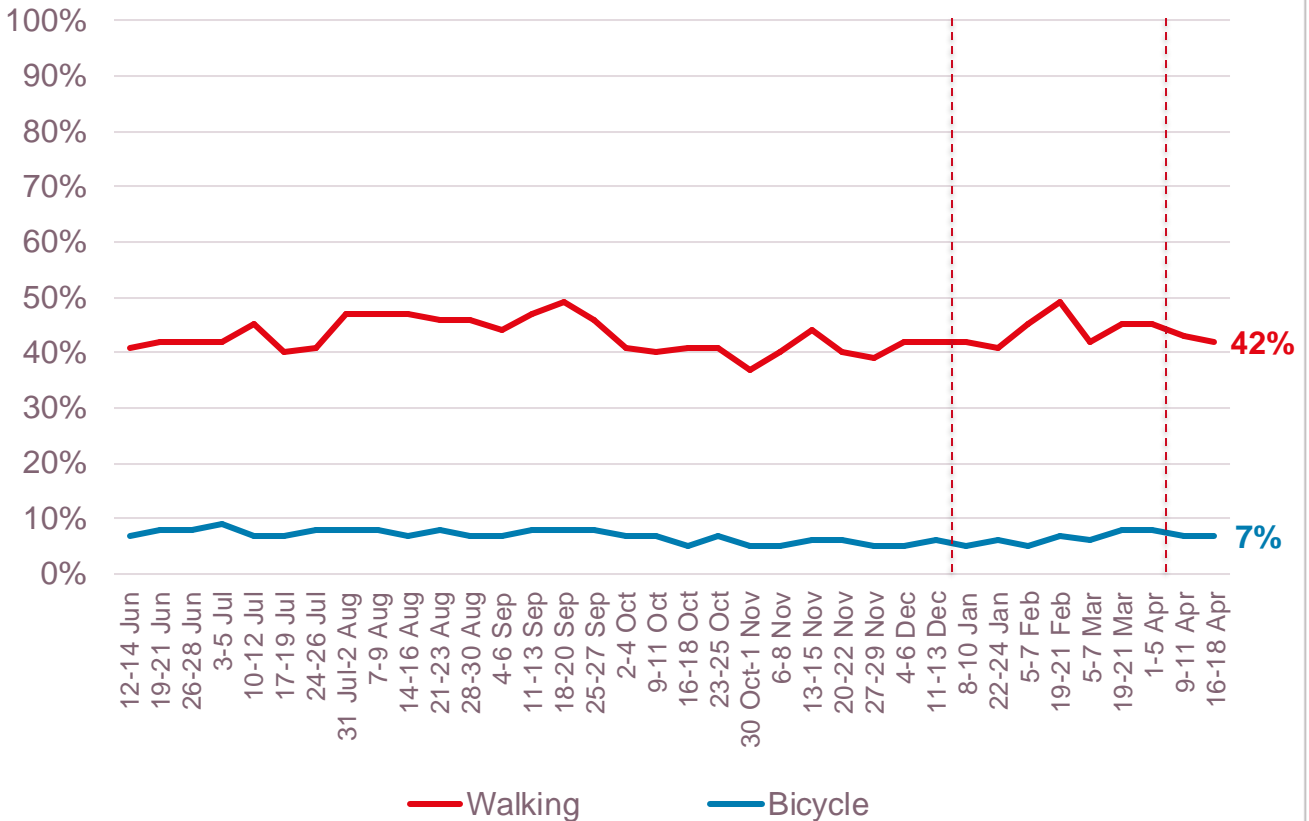
----- Changed from 'last 7 days' to 'last two weeks' between week 34 (8-10 Jan) and week 40 (1-5 April)

Travel during Covid-19: omnibus wave 42

More than two in five have made journeys on foot, while fewer have cycled

Use of other modes of transport in the last seven days

Trend - last 36 waves

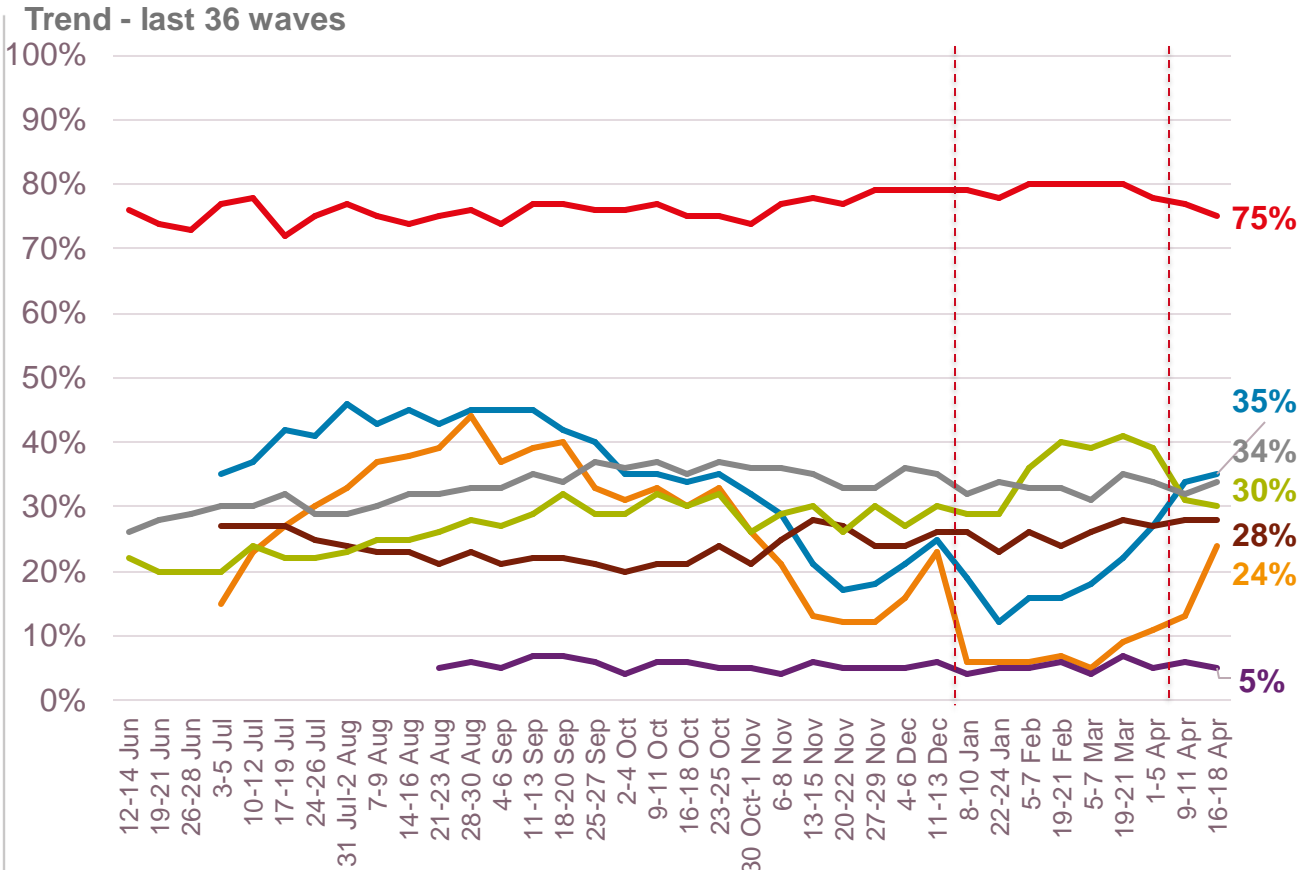


..... Changed from 'last 7 days' to 'last two weeks' between week 34 (8-10 Jan) and week 40 (1-5 April)

Travel during Covid-19: omnibus wave 42

Increasing proportions are making journeys to visit friends or relatives or travelling for other leisure reasons

Reasons for making journeys in the last seven days



- Shopping for essentials / groceries*
- Visiting friends or relatives"
- To travel for other leisure reasons such as eating out, visiting attractions etc."
- To travel to exercise"
- Travelling on personal business (doctor, hospital, bank etc.)
- Travelling to or from place of work
- Travelling for work outside of travelling to or from place of work^

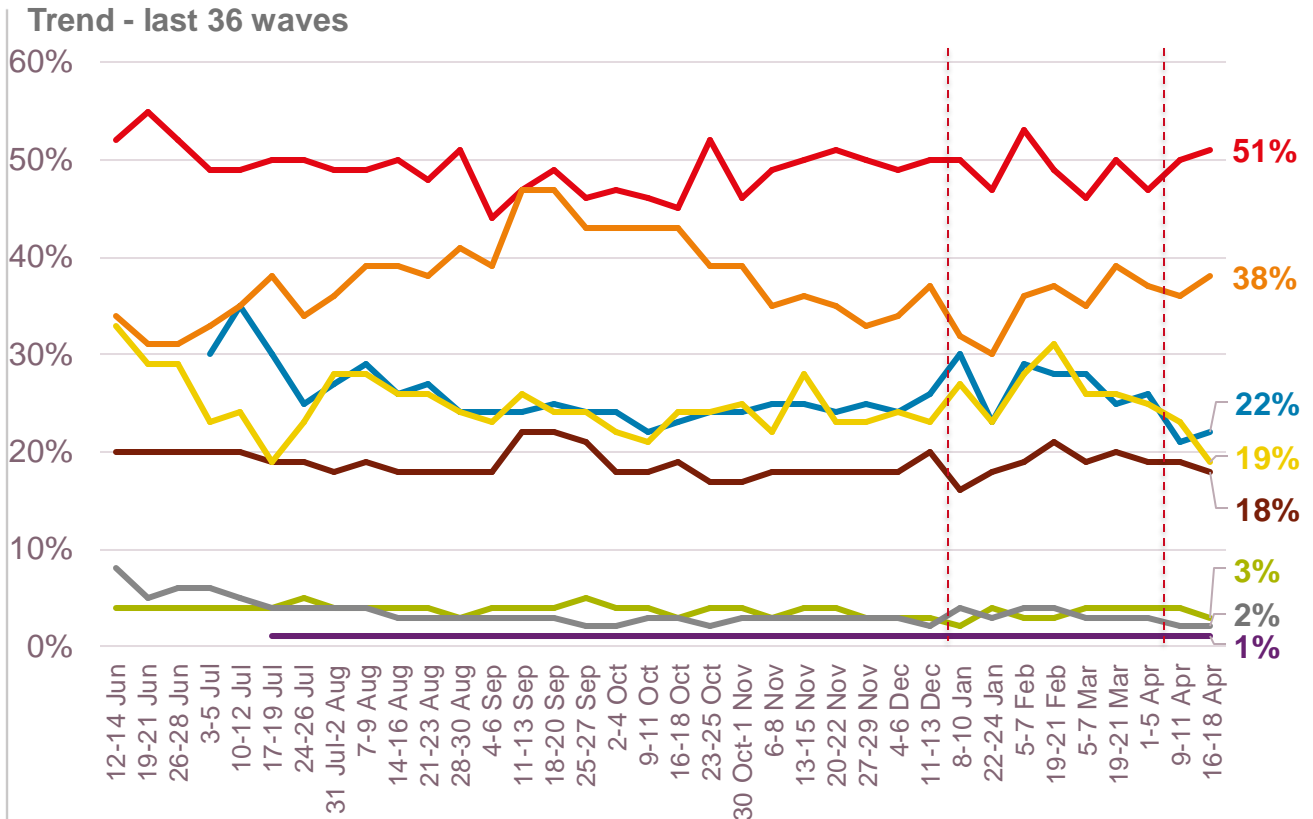
----- Changed from 'last 7 days' to 'last two weeks' between week 34 (8-10 Jan) and week 40 (1-5 April)
 " data shown from week 10 (3-5 July) only as significant text changes made from this week onwards

^ New code added at week 17 (21-23 August)

Travel during Covid-19: omnibus wave 42

Around one in five have not used public transport because they do not feel safe to do so

Reasons public transport not used in the last seven days



- Because I had no reason to make a journey using public transport
- Because I don't feel safe using public transport at the moment^
- I have used a car / van instead
- I have used a motorcycle instead
- I have cycled instead
- I could not travel because I was ill / self isolating / caring for others
- I have walked instead
- Because I have been avoiding public transport*

--- Changed from 'last 7 days' to 'last two weeks' between week 34 (8-10 Jan) and week 40 (1-5 April)

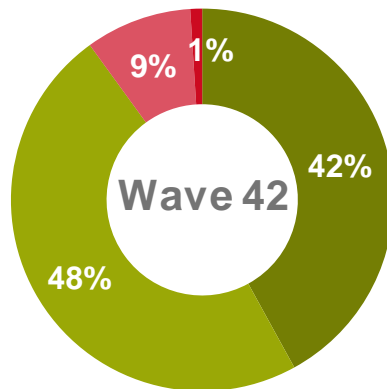
* Wording amended at week 10 (3-5 July) and at week 13 (24-26 July)

^ New coded added at week 10 (3-5 July)

Around nine in ten of those making train journeys in the last seven days felt safe doing so

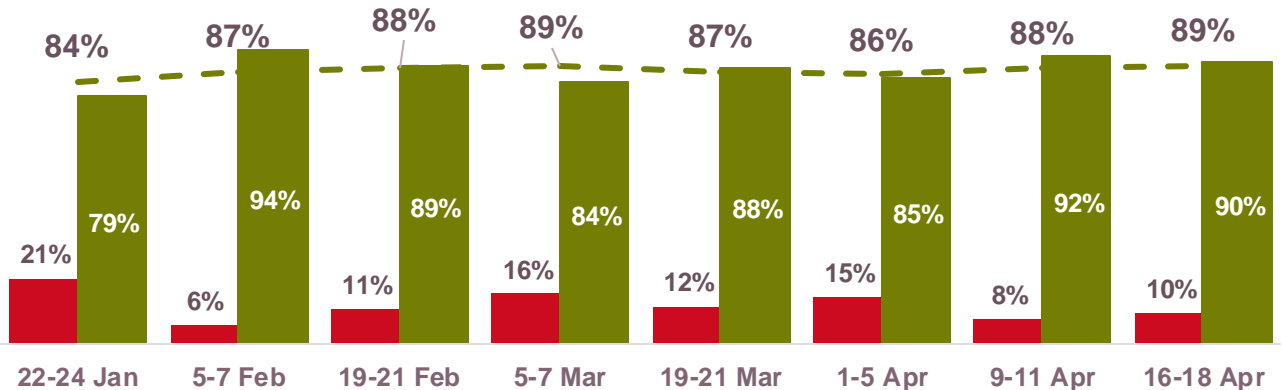
Specifically in relation to coronavirus, how safe do you feel at the moment when using trains?

Base: All making journeys by train, W42 – 106



■ Very Safe ■ Fairly safe ■ Not very safe ■ Not at all safe

Trend - last eight waves



■ % Not very / Not at all safe

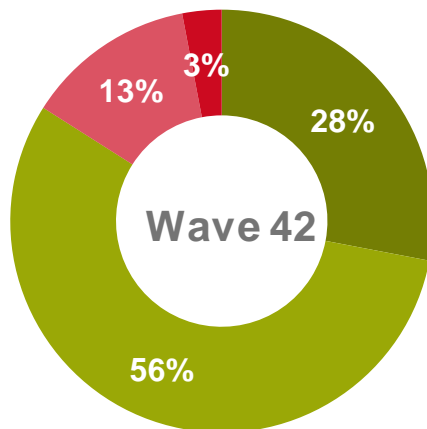
■ Very / Fairly safe

- - - % Very / Fairly safe - aggregated three-wave average

More than four in five of those making bus journeys in the last seven days felt safe doing so

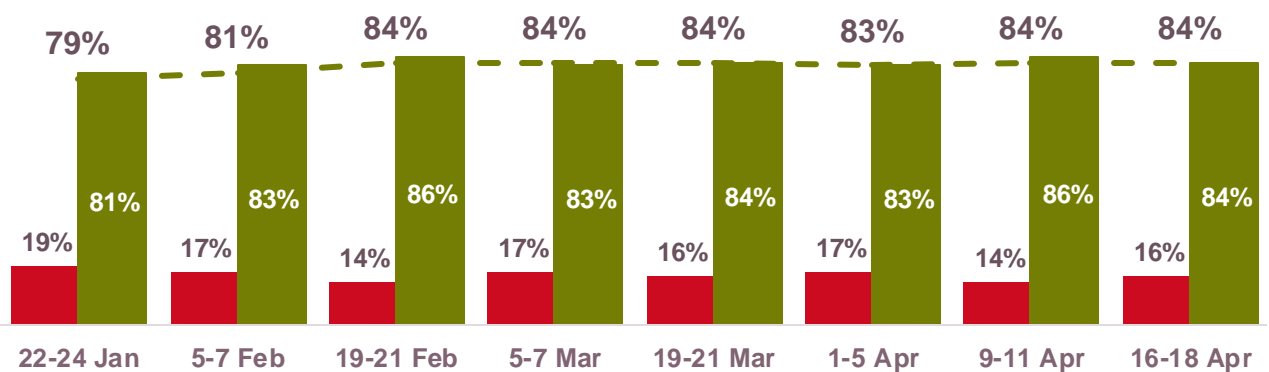
Specifically in relation to coronavirus, how safe do you feel at the moment when using buses?

Base: All making journeys by bus, W42 – 241



■ Very Safe ■ Fairly safe ■ Not very safe ■ Not at all safe

Trend - last eight waves



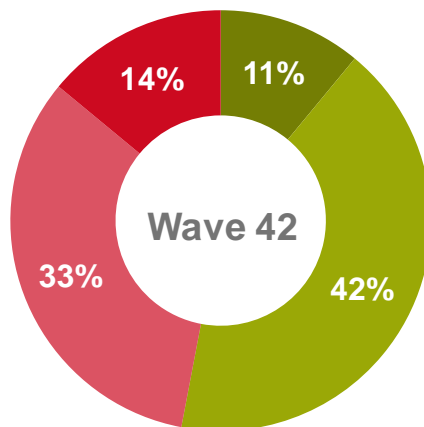
■ % Not very / Not at all safe

■ Very / Fairly safe

--- % Very / Fairly safe - aggregated three-wave average

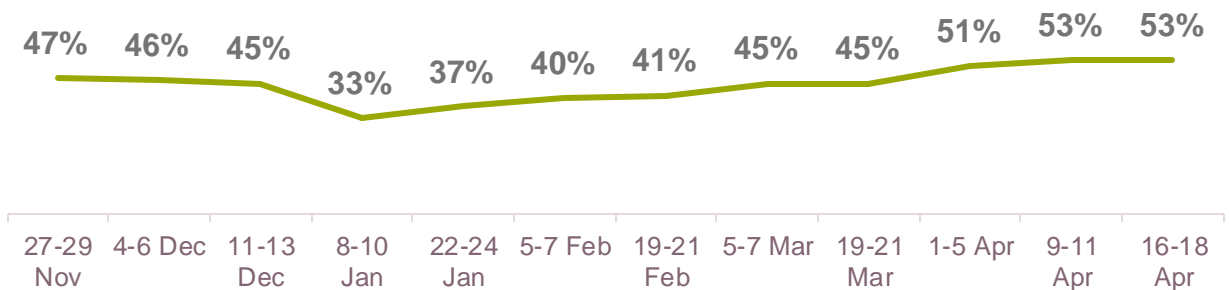
A half of those who have not used a train in the last seven days say that they would feel safe doing so

Specifically in relation to coronavirus[^], if you had to make a journey at the moment, how safe would you feel making a journey by train?
 Base: All *excluding* those making journeys by train, W42 – 1,893



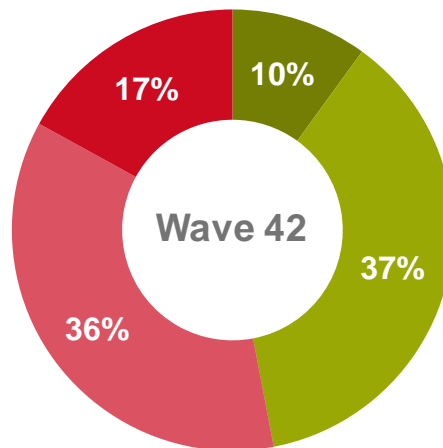
■ Very Safe ■ Fairly safe ■ Not very safe ■ Not at all safe

Trend - % safe – last twelve waves



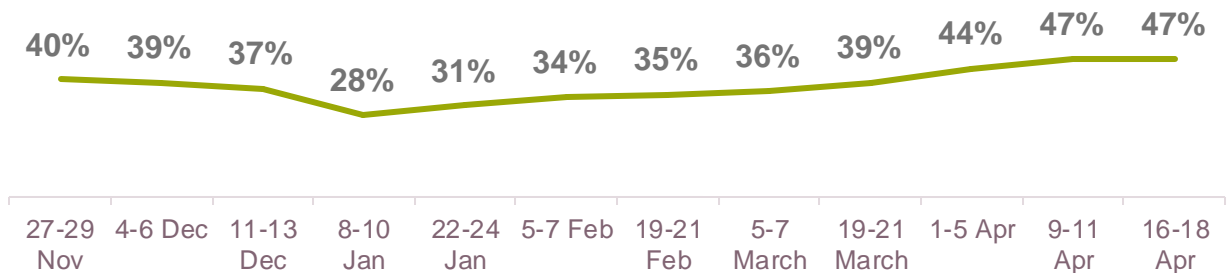
A half of those who have not used a bus in the last seven days say they would feel safe doing so.

Specifically in relation to coronavirus, if you had to make a journey at the moment, how safe would you feel making a journey by bus?
 Base: All *excluding* those making journeys by bus, W42 – 1,758



■ Very Safe
 ■ Fairly safe
 ■ Not very safe
 ■ Not at all safe

Trend - % safe – last twelve waves

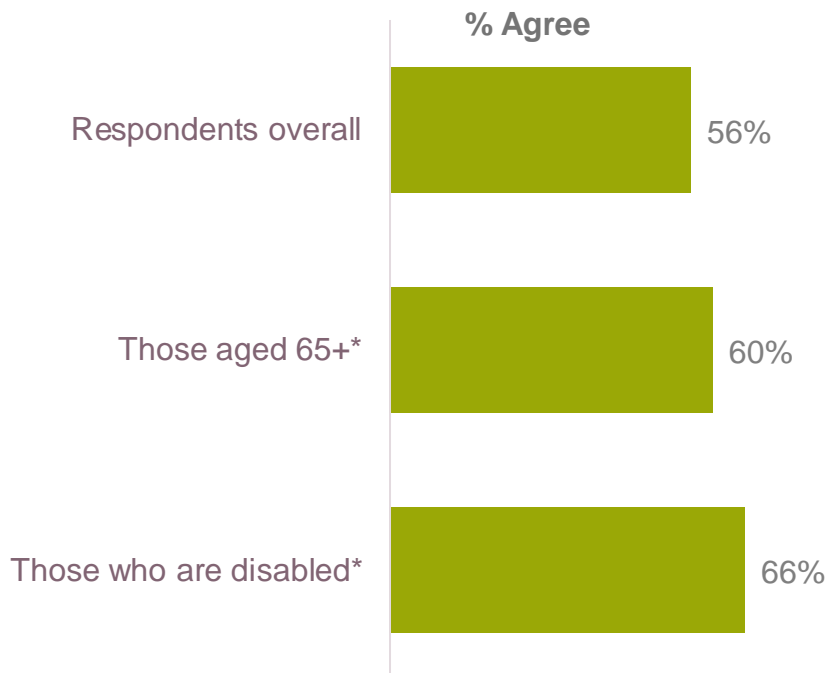
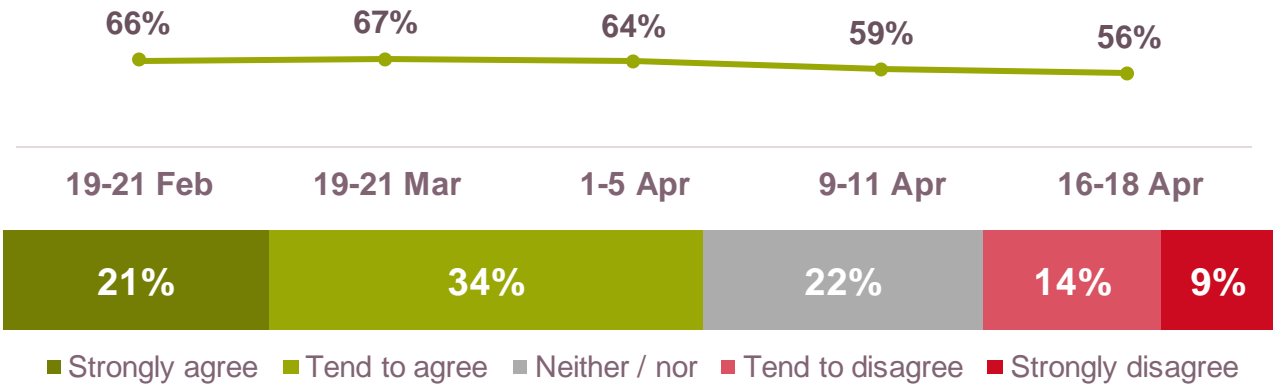


For more than half Coronavirus is a major concern. Those who are older and more vulnerable are more likely than others to agree.

Coronavirus is a major concern for me

Base: W42 1,972

% Agree



Base excludes don't know/not applicable answers

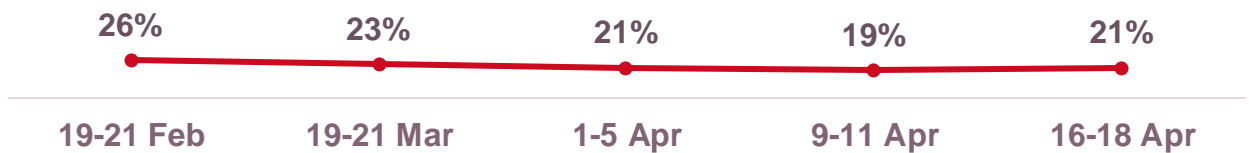
* Denotes statistically significant difference from respondents overall

A half think that enough is being done to ensure coronavirus safety on public transport. A fifth disagree.

Enough is being done to ensure coronavirus safety on public transport

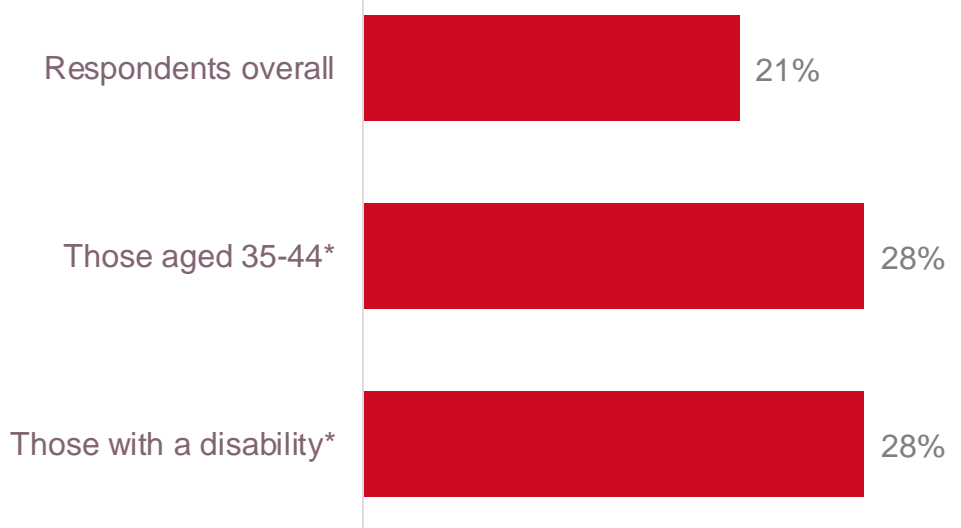
Base: W42 1,484

% Disagree



■ Strongly agree
 ■ Tend to agree
 ■ Neither / nor
 ■ Tend to disagree
 ■ Strongly disagree

% Disagree



Base excludes don't know/not applicable answers

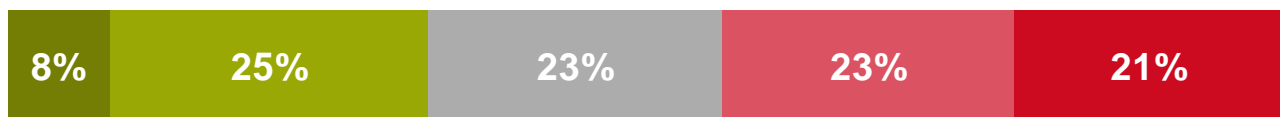
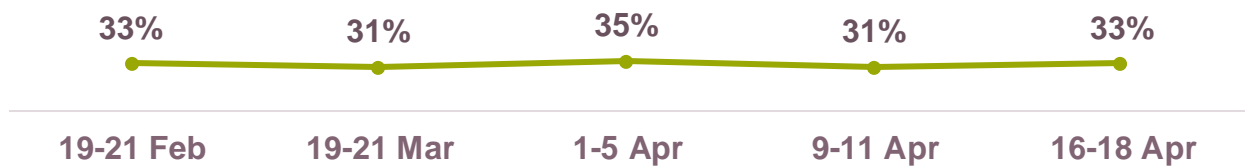
* Denotes statistically significant difference from respondents overall

Three in ten say that they will never again feel completely comfortable on public transport

I will never again feel completely comfortable on public transport

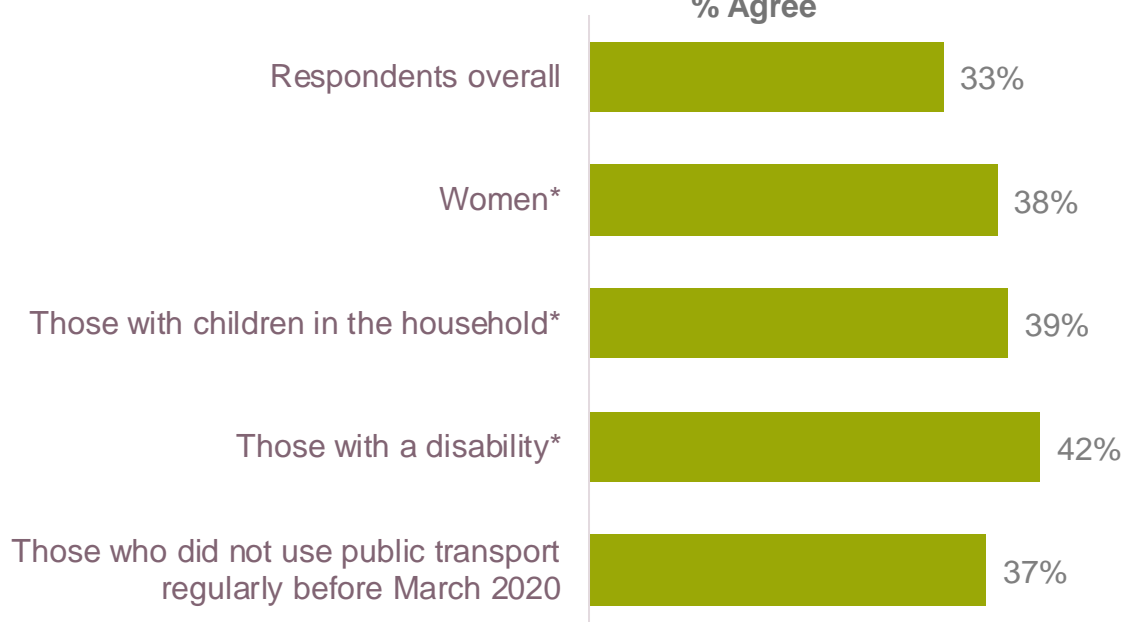
Base: W42 1,808

% Agree



■ Strongly agree ■ Tend to agree ■ Neither / nor ■ Tend to disagree ■ Strongly disagree

% Agree



Base excludes don't know/not applicable answers

* Denotes statistically significant difference from respondents overall

Three quarters have been avoiding unnecessary activities due to the coronavirus

I have been avoiding unnecessary activities due to the coronavirus

Base: W42 1,961

% Agree



19-21 Feb

19-21 Mar

1-5 Apr

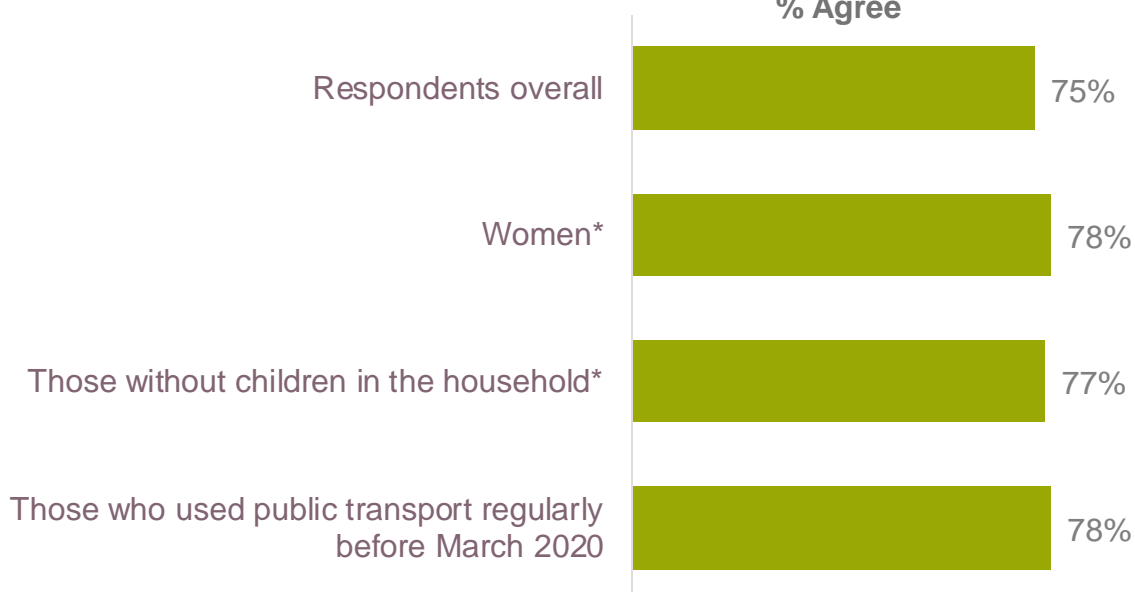
9-11 Apr

16-18 Apr



■ Strongly agree ■ Tend to agree ■ Neither / nor ■ Tend to disagree ■ Strongly disagree

% Agree



Base excludes don't know/not applicable answers

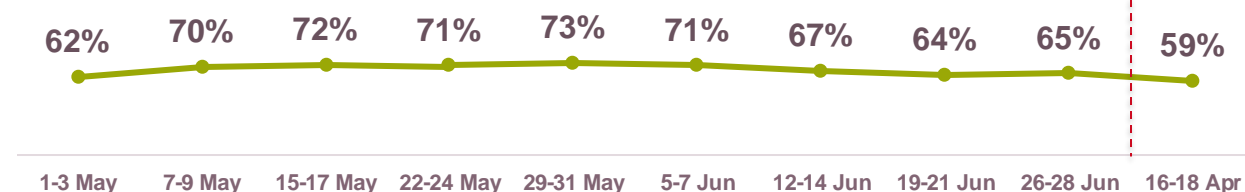
* Denotes statistically significant difference from respondents overall

Three in five say that they won't use public transport unless social distancing is in place

I won't use public transport unless social distancing is in place[^]

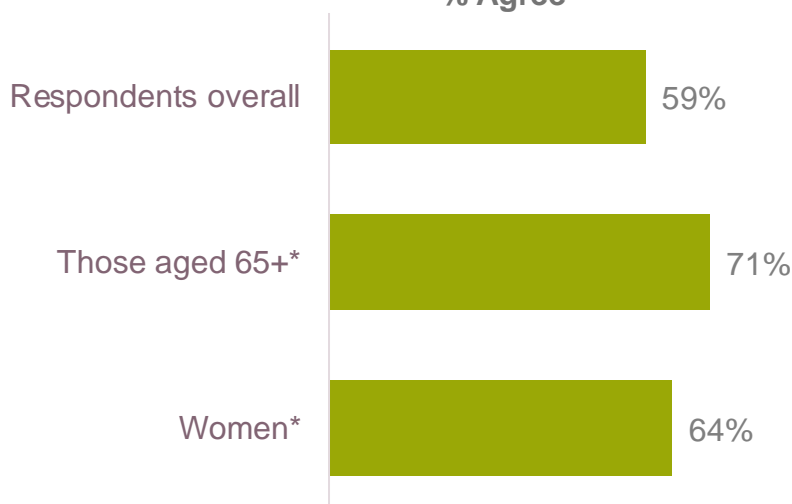
Base: W42 1,746

% Agree



■ Strongly agree
 ■ Tend to agree
 ■ Neither / nor
 ■ Tend to disagree
 ■ Strongly disagree

% Agree



Base excludes don't know/not applicable answers

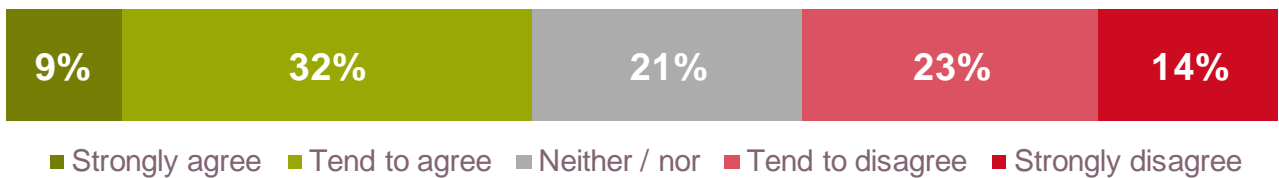
[^] Statement previously asked between waves 1 and 9 (1st May – 28 Jun 2020)

----- Represents the break in fieldwork

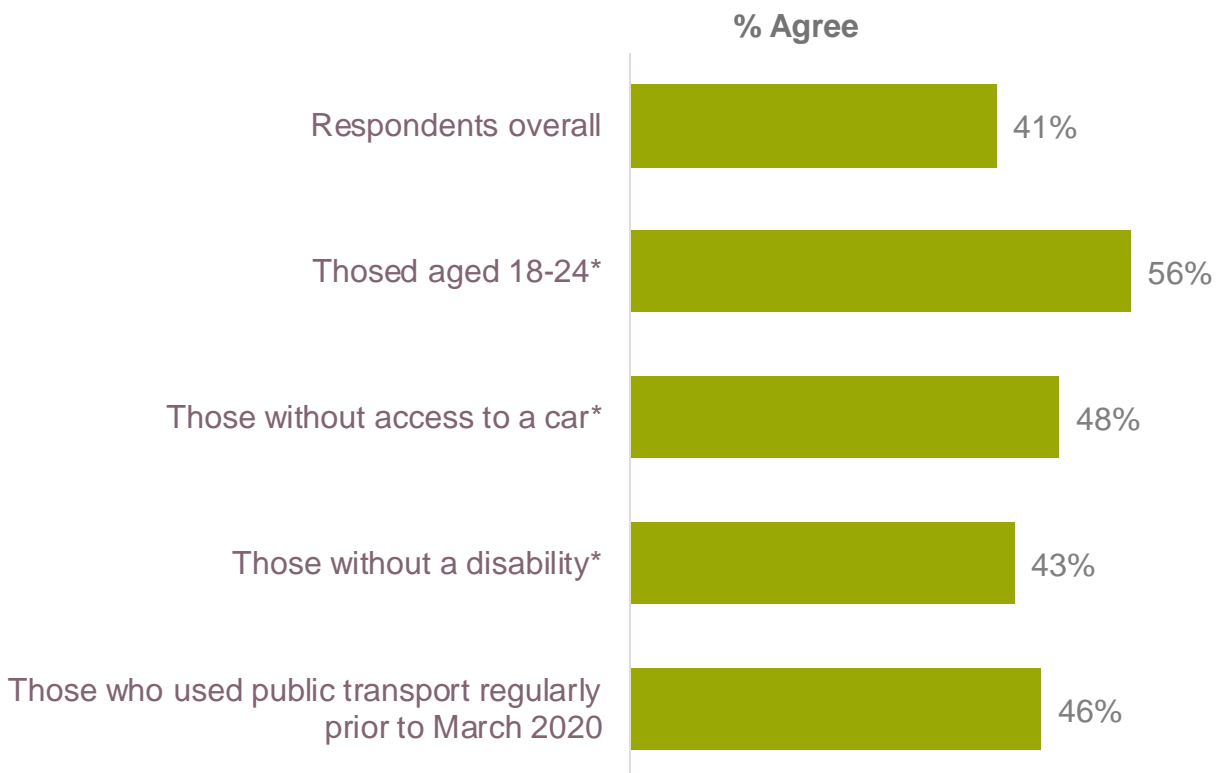
* Denotes statistically significant difference from respondents overall

Two in five say that as long as passengers are wearing face coverings, relaxing the social distancing on public transport makes sense to them

As long as passengers are wearing face coverings, relaxing the social distancing on public transport makes sense to me
 Base: W42 1,857



■ Strongly agree ■ Tend to agree ■ Neither / nor ■ Tend to disagree ■ Strongly disagree



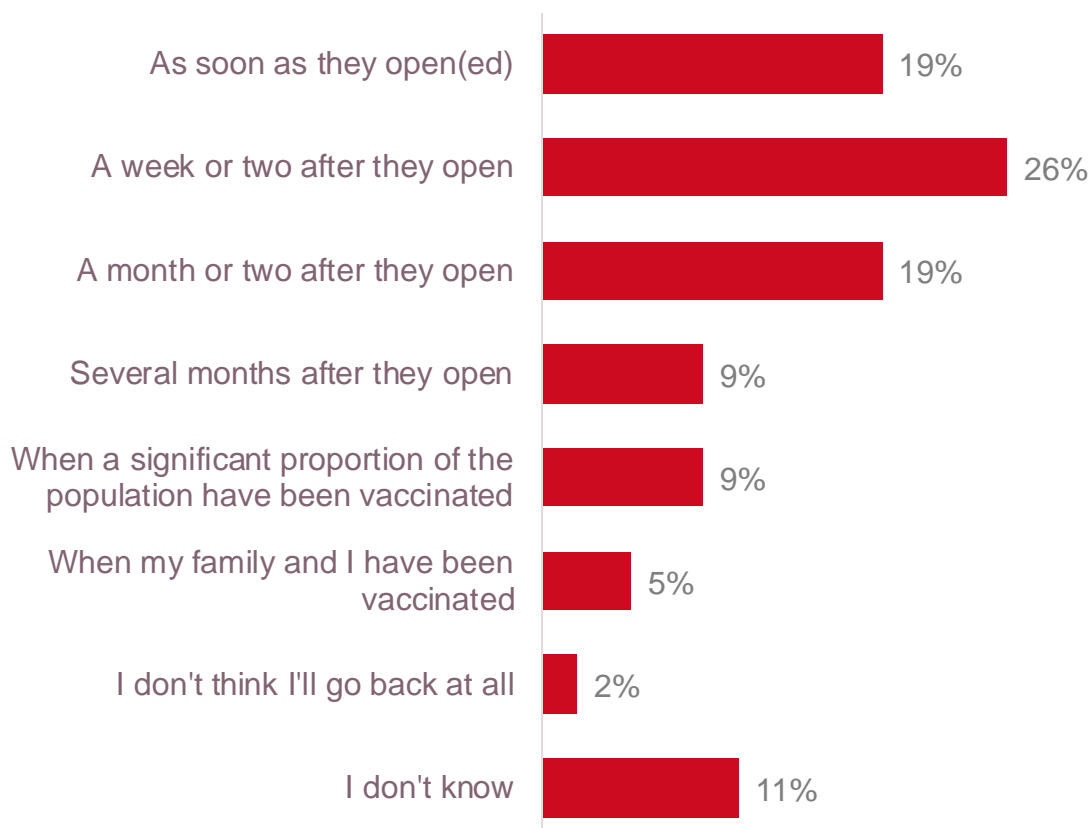
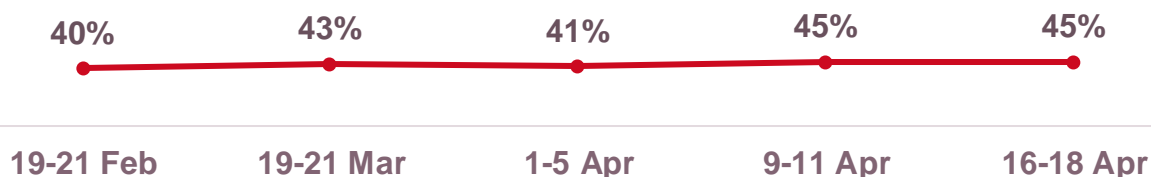
Base excludes don't know/not applicable answers

* Denotes statistically significant difference from respondents overall

One in five expect to return to shopping centres/department stores as soon as restrictions are lifted

How soon did you or do you expect to return to the following places? Shopping centre / Department store
 Base: Those who used shopping centres previously (W42 1,915)

% Within a week or two – As soon as they open(ed)

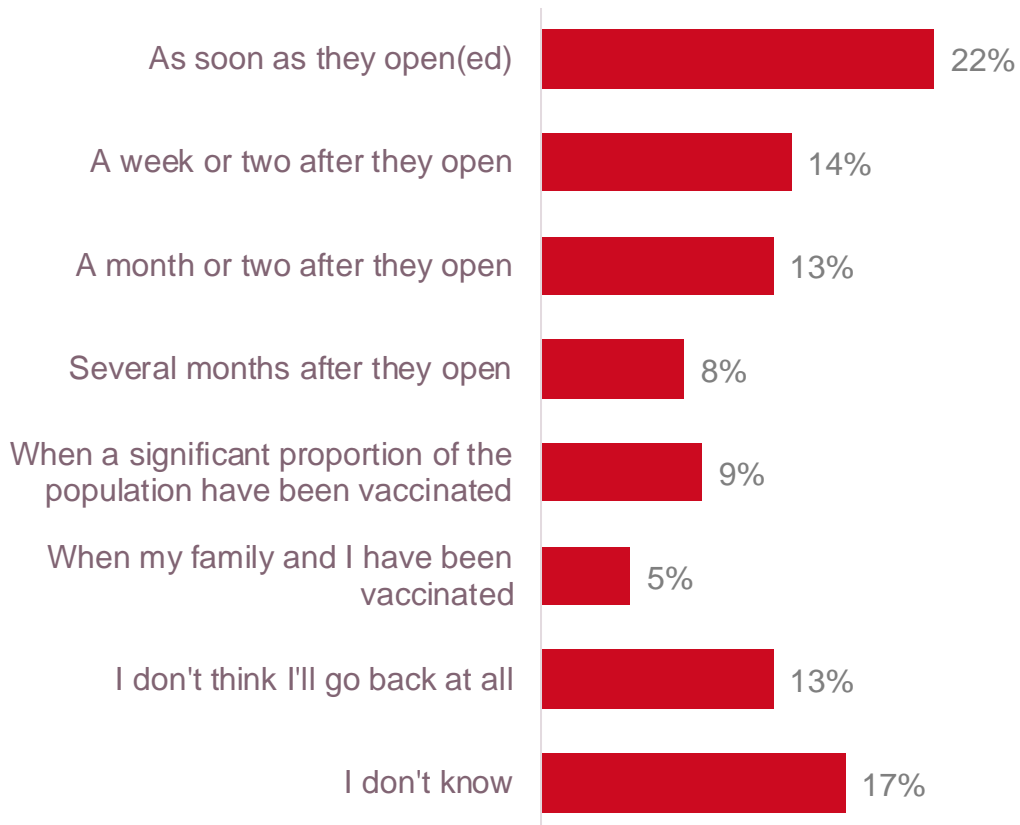
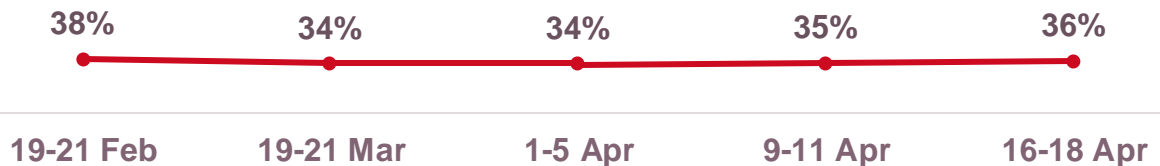


Around one in five expect to return to gyms as soon as restrictions are lifted

How soon did you or do you expect to return to the following places? Gyms

Base: Those who used gyms previously (W42 733)

% Within a week or two – As soon as they open(ed)

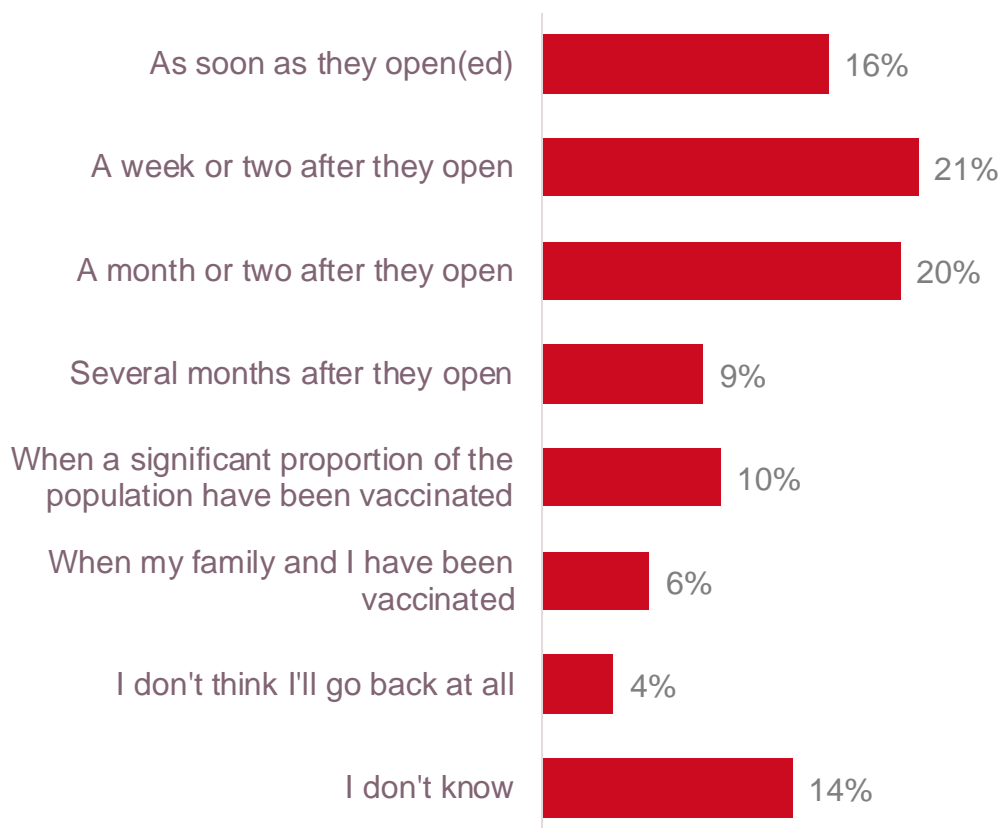
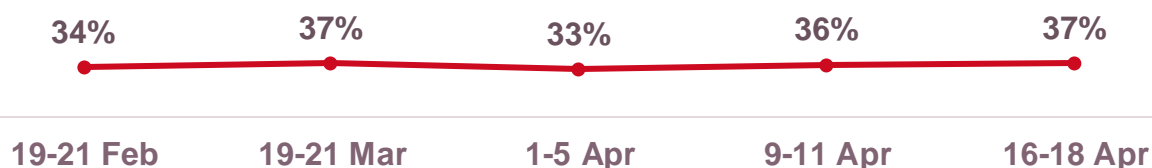


Almost one in five expect to return to pubs as soon as restrictions are lifted

How soon did you or do you expect to return to the following places? Pubs

Base: Those who used pubs previously (W42 1,619)

% Within a week or two – As soon as they open(ed)

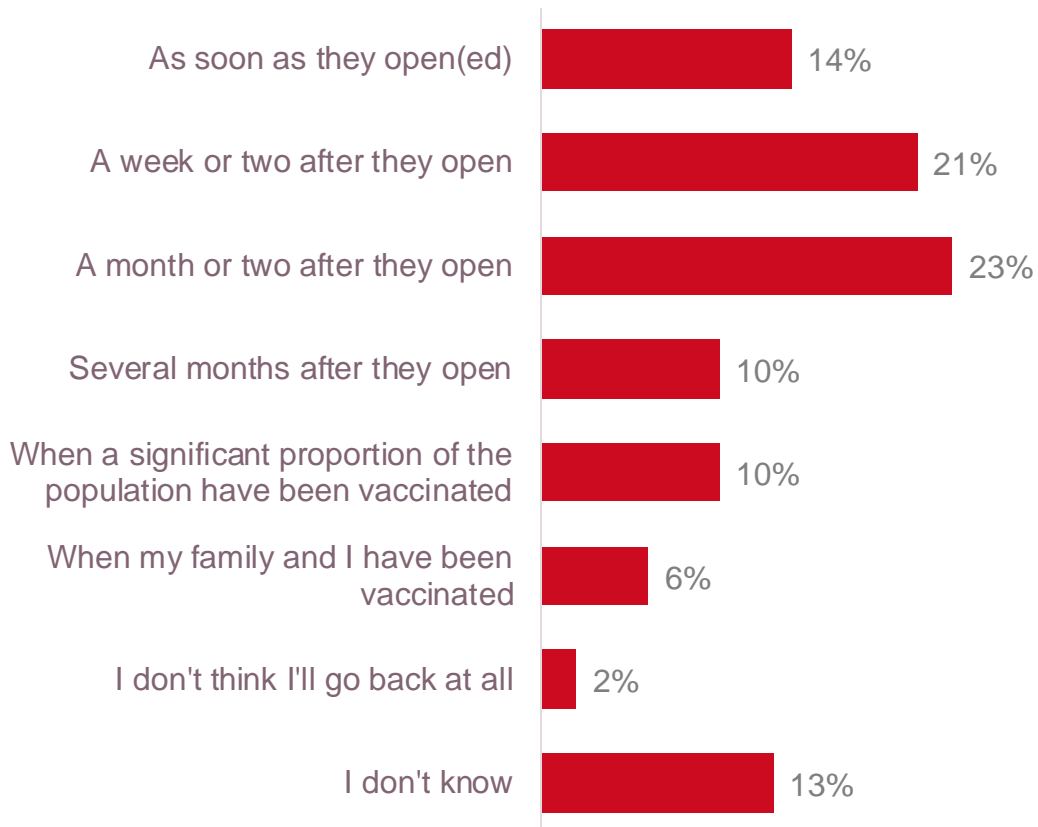
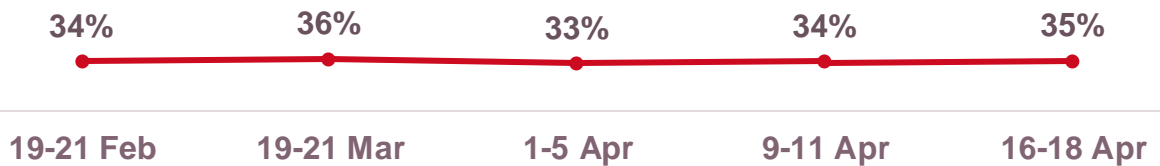


Less than one in five expect to return to restaurants as soon as soon as restrictions are lifted

How soon did you or do you expect to return to the following places? Restaurants

Base: Those who used restaurants previously (W42 1,874)

% Within a week or two – As soon as they open(ed)

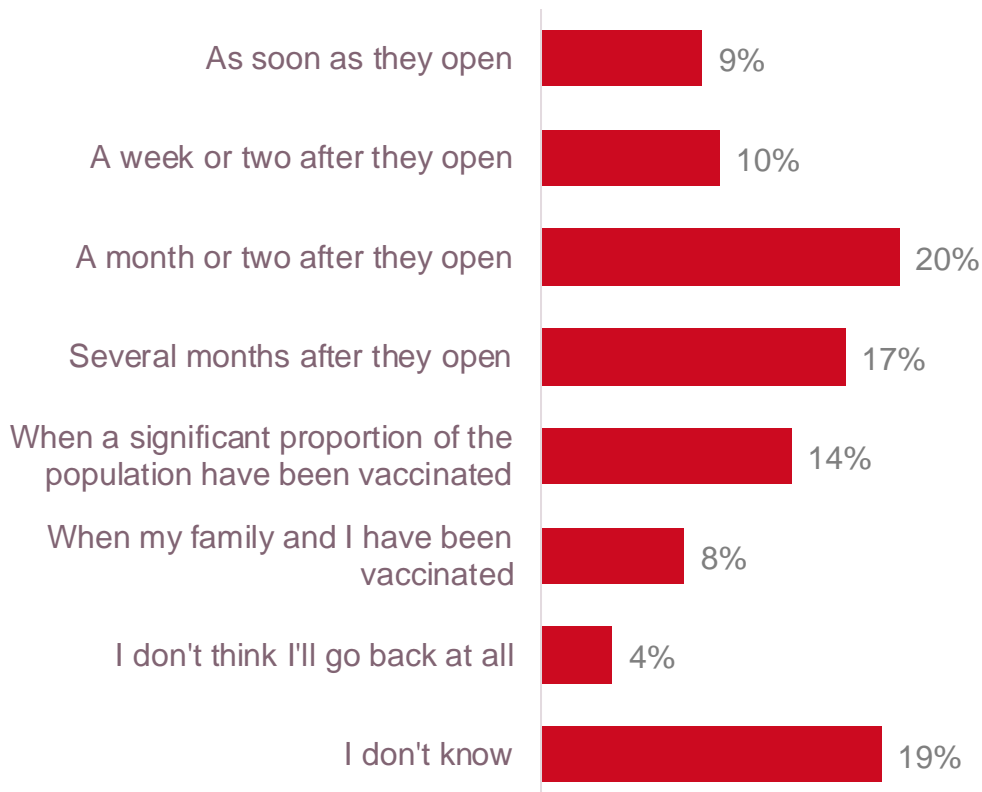
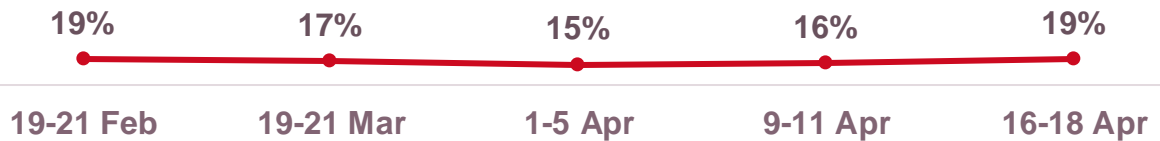


One in ten expect to return to cinemas or theatres as soon as restrictions are lifted

How soon do you expect to return to the following places? Cinemas or theatres

Base: Those who used cinemas or theatres previously
(W42 1,625)

% Within a week or two – As soon as they open

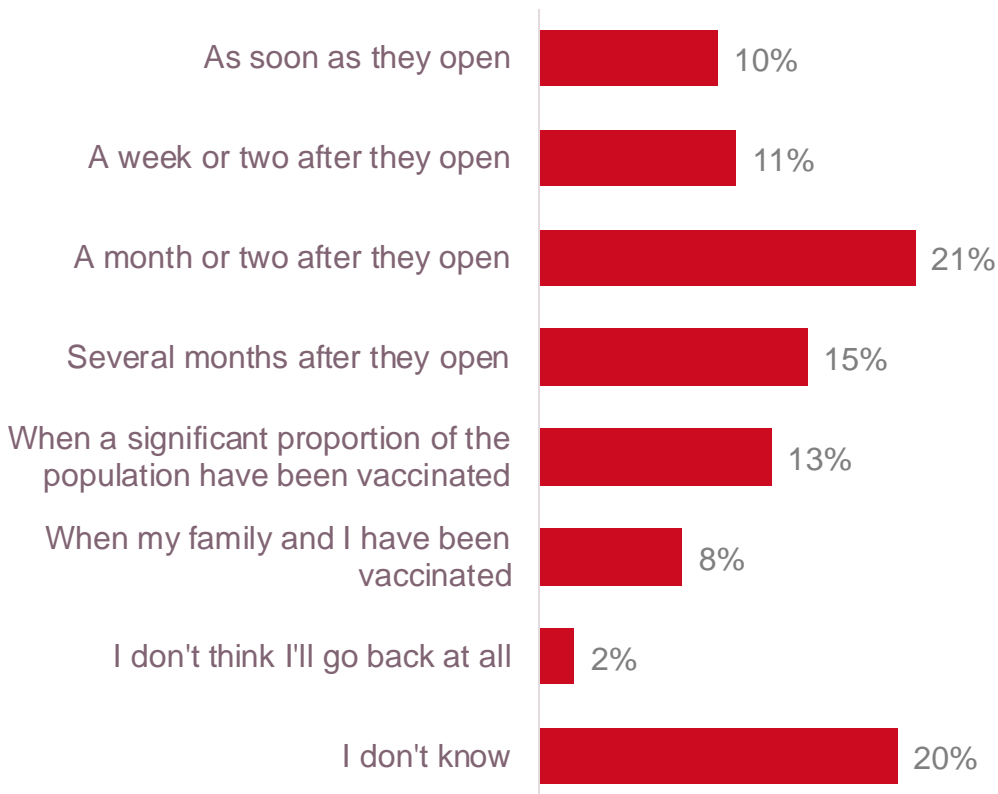
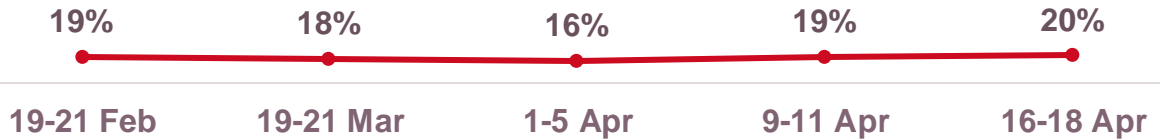


One in ten expect to return to indoor leisure attractions as soon as restrictions are lifted

How soon do you expect to return to the following places? Indoor leisure attractions

Base: Those who used indoor leisure attractions previously
(W42 1,701)

% Within a week or two – As soon as they open

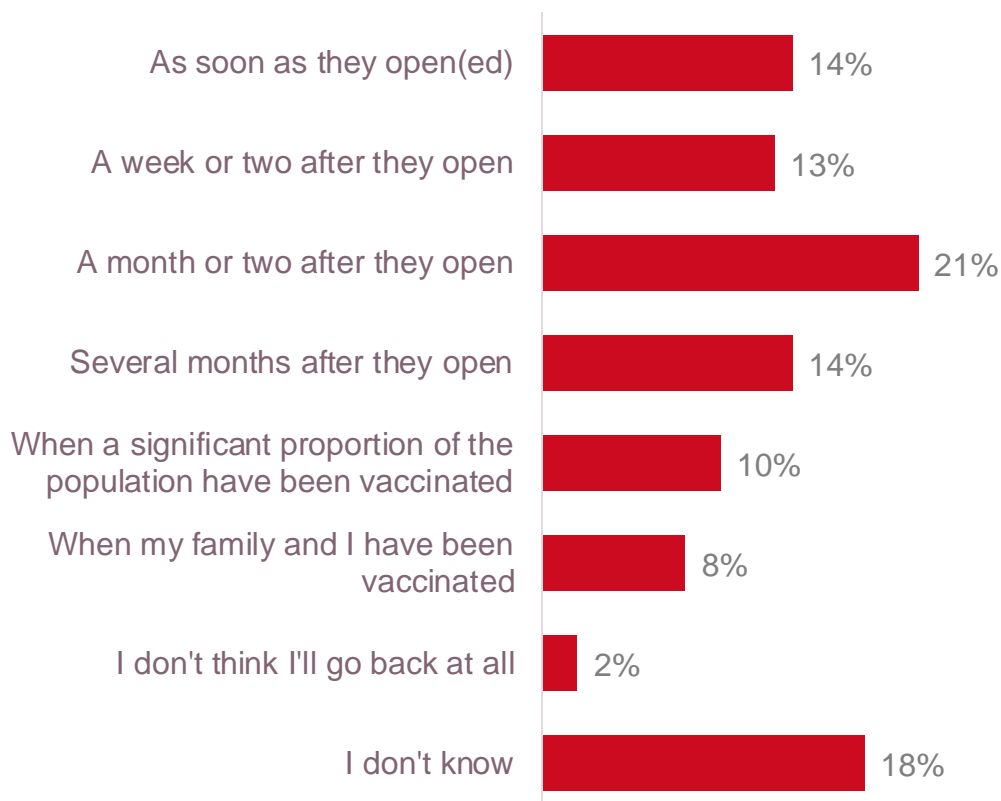
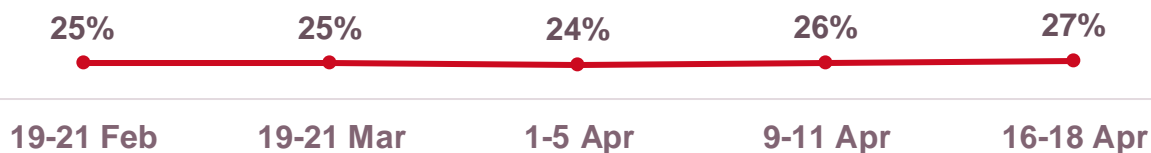


Almost half expect to return to outdoor leisure attractions within a month or two or sooner

How soon did you or do you expect to return to the following places? Outdoor leisure attractions

Base: Those who used outdoor leisure attractions previously (W42 1,753)

% Within a week or two – As soon as they open(ed)



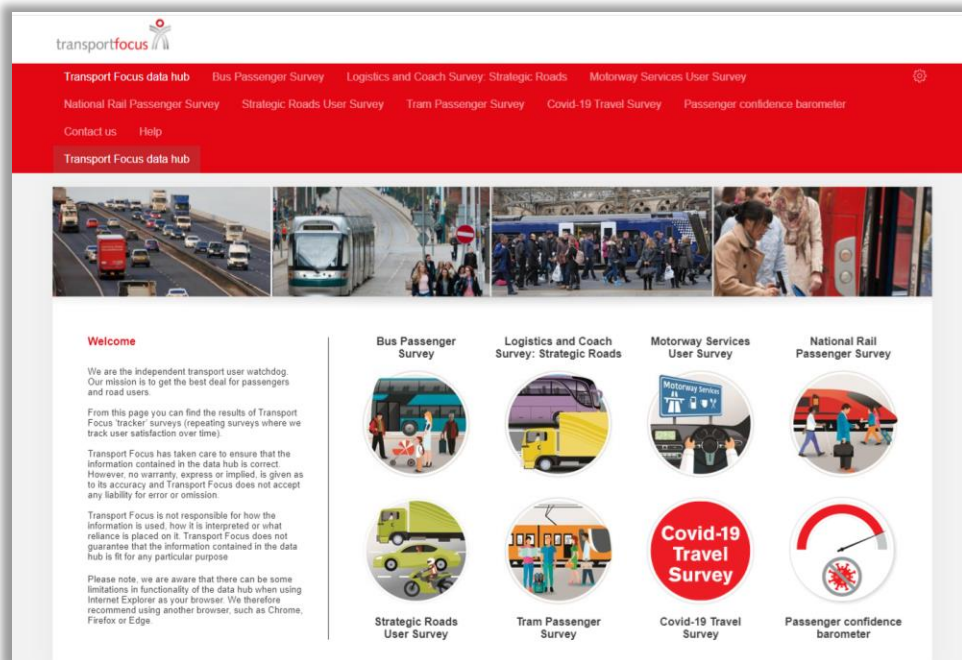
Transport Focus Data Hub

All the results from this wave and previous waves of this research are available for your own analysis on the Transport Focus Data Hub.

The data is available for anyone to view at:

www.transportfocus.org.uk/data-hub

You can access the survey by clicking on 'Covid-19 Travel Survey'



Please note:

Data from new waves of the survey is uploaded and made available on each Friday morning. The survey may be unavailable on the hub on Thursday afternoon while the upload of new data takes place.

Survey method and sample breakdown – week 42

- c.2000 online interviews per wave. Using Yonder Consulting omnibus.
- Nationally representative of Great British population – not all respondents are passengers on public transport.
- Those who have provided a response are excluded from the subsequent wave of research.
- Fieldwork repeated every weekend. Wave 42 fieldwork: 16-18 April
- The analysis of attitudinal questions excludes responses from those who don't have an opinion or who say that the question is not applicable to them.

Sample size by age groups and gender

	TOTAL	18-24	25-34	35-44	45-54	55-64	65+	Male	Female
Wave 42	2013	196	350	318	355	295	499	988	1025

Sample size by region

	Scotland	North East	North West	Yorks & Humber	West Midlands	East Midlands	Wales	Eastern	London	South East	South West
Wave 42	178	75	226	152	202	154	99	184	296	286	161