

T-12 / Informed Traveller

Paul McMahon

Route Managing Director, Freight & National Passenger Operators

Transport Focus Board

15 May 2018

A brief recap on context

- Network Rail offered May 2018 TT in November 2017
- Delay to the completion of Bolton Phase 4 Electrification was communicated in January 2018. This led to the May TT needing a re-write for the north of England
- We have been managing some other significant May 2018 TT changes:
 - Delay to the introduction of Class 385s in Scotland
 - Introduction of a phased timetable for GTR
- Options to deal with TT issues discussed with the industry
- Network Rail confirmed decision on T-12 recovery plan on 22 February 2018
- May 2018 TT starts Sunday 20 May
- Unprecedented situation for the industry

Key milestones in Working TT Preparation

- 64 weeks out - TT Planning rules consultation starts
- 55 weeks out - capture material changes to TT (Infrastructure & Stock)
- 44 weeks out - final planning rules published
- 40 weeks out - start of TT preparation period
- 26 weeks out - Network Rail publishes new Working TT
- 22 weeks out - end of Operator window to appeal
- 18 weeks out - the standard Informed Traveller process begins
- 4 weeks out - NR data sent to publishers

Worked example - May 2019 TT

- 23 February 2018 – TT Planning rules consultation starts
- 27 April 2018 – capture material changes to TT (Infrastructure, Rolling Stock)
- 13 July 2018 – final planning rules published
- 10 August 2018 – start of TT preparation period
- 16 November 2018 – Network Rail publishes new Working TT
- 14 December 2018 – end of Operator window to appeal
- 19 April 2019 – NR data sent to publishers
- 19 May 2019 – new TT begins

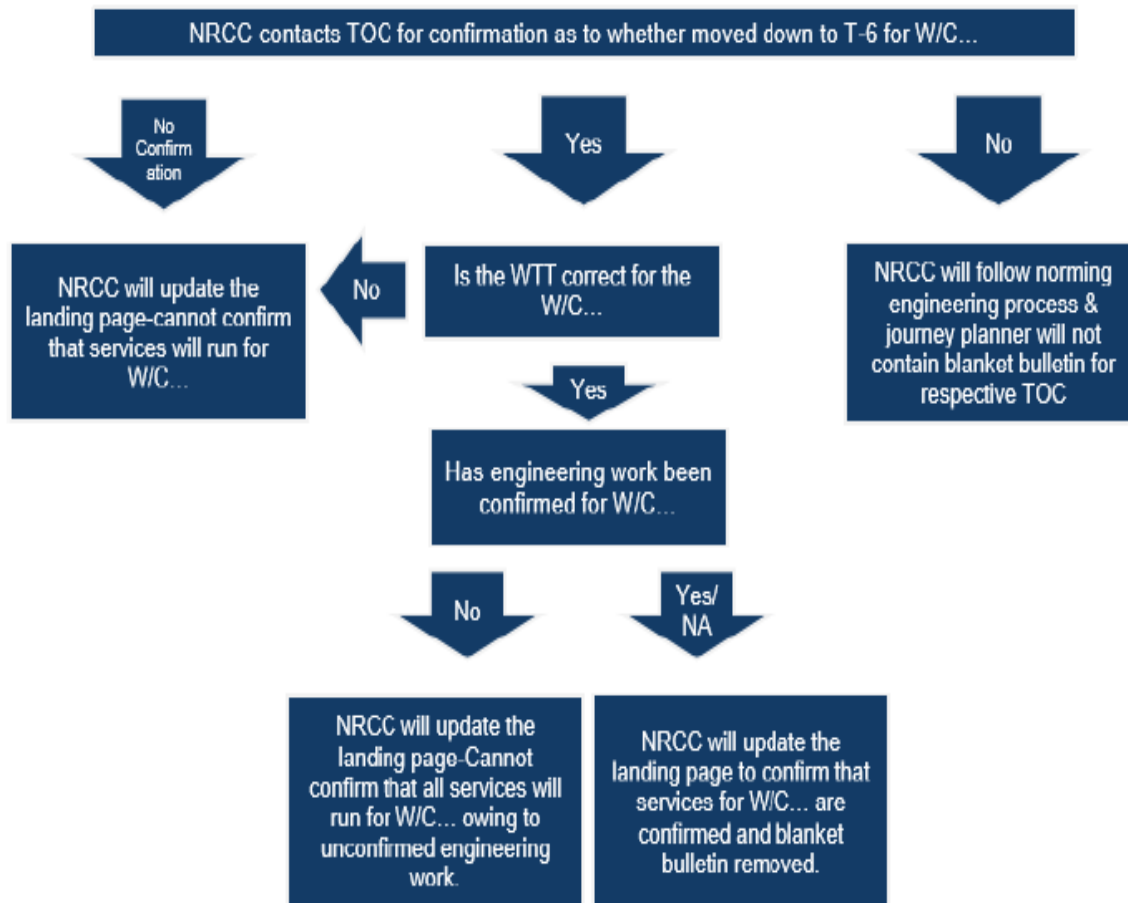
Key national recovery plan principles (1)

- During initial phase of recovery plan, bids to be received no later than TW-8 – full passenger plan
- Operators encouraged to bid earlier than TW-8 if possible
- All bids received on time will be offered and published at the recovery plan deadlines
- Some operators have struggled to meet the bidding deadlines
- No quality dip with the inputs from Operators or offers from NR
- Robust challenge of all late notice change requests
- Working closely with operators to understand what services could be opened for reservations outside of the recovery plan eg weeks 21, 22 & 23 around Euston

Key national recovery plan principles (2)

- Offer (*BAU @ TW14*) and publication (*BAU @ TW12*) principles to be kept aligned throughout the initial recovery period – i.e. will be done at the same time
- Plan to deliver 5 weeks of Informed Traveller in 4 week periods (recover 1 week in 4)
- Industry ownership and transparency. Progress against plans to be shared
- Target restoration of TW-12 for Week 39/40 (Christmas / New Year) during October
- There is no float in our plan.....

NRCC T-12 monitoring process



Operators able to open for reservations

Based on known planned engineering works and likelihood of having amended schedules post TW-12

Week No.	Week 8	Week 9	Week 10	Week 11	Week 12	Week 13	Week 14	Week 15	Week 16	Week 17	Week 18	Week 19	Week 20	Week 21	Week 22	Week 23	Week 24	Week 25	Week 26	Week 27	Week 28	Week 29	Week 30	Week 31	Week 32	Week 33	Week 34	Week 35	Week 36	Week 37
VTEC	Green	Green	Yellow	Green	Green	Green	Green	Green	Green	Green	Green	Green	Green	Green	Green	Green	Green	Green	Red	Red	Red	Red	Green	Green	Green	Red	Red	Red	Red	Green
VTWC	Red	Red	Yellow	Green	Green	Green	Green	Green	Green	Yellow	Yellow	Yellow	Yellow	Red	Red	Red	Green	Yellow	Green	Green	Green	Green	Green	Green	Green	Green	Yellow	Yellow	Green	Green
EMT - London Services	Green	Green	Red	Green	Green	Green	Green	Green	Green	Green	Green	Green	Green	Red	Red	Red	Green	Green	Green	Green	Green	Green	Green	Green	Green	Green	Green	Green	Green	Green
EMT - Liv to Nor Services	Red	Green	Yellow	Yellow	Yellow	Yellow	Yellow	Yellow	Yellow	Yellow	Yellow	Yellow	Green	Green	Green	Green	Green	Green	Red	Red	Green	Green	Green	Green	Red	Red	Green	Red	Red	Green
XC	Yellow	Red	Red	Green	Red	Red	Red	Red	Red	Red	Red	Green	Green	Green	Green	Green	Green	Green	Yellow	Yellow	Yellow	Yellow	Yellow	Red	Red	Red	Red	Red	Red	Green
AGA	Red	Green	Red	Red	Green	Green	Green	Green	Green	Green	Green	Green	Red	Green	Red	Red	Red	Red	Red	Red	Red	Red	Red	Green	Red	Red	Green	Red	Green	Green

Recovery plan back to TW-12 offer

Planning Month	Offer	Timetable operates
March	TW-6	May
April	TW-6	June
May	TW-6	June / July
June	TW-6	July / August
July	TW-7 / TW-8	August / September
August	TW-8 / TW-9	October / November
September	TW-10 / TW-11	November / December
October	TW-11 / TW-12	December

How are we progressing?

- 6 weeks in to the recovery plan. Planning week 13 (23 June) offered Fri 11 May
- Most operators met bidding deadlines for the first weeks of recovery plan
- All bids received were offered and published by TW-6 offer deadlines
- GTR have a revised recovery plan outlining when they expect to be able to bid, which is up to 4 weeks later than the national recovery plan bid deadlines. Largely driven by work to prepare for the May TT + late change to the access plan.
- GWR expect to be unable to meet recovery plan bid deadlines due to continuing challenges with late change to the access plan driven by electrification works

Delivery against Informed Traveller recovery plan

Operator Bid	8	9	10	11	12	13	14
	Bid	Bid	Bid	Bid	Bid	Bid	Bid
Arriva Trains Wales [®]	Early	Early	Early	Early	Early	Early	Early
c2c	Early	Early	Early	Early	Early	Early	Early
Chiltern Railways	Early	Early	Early	Early	Early	Early	Early
CrossCountry [®]	Early	Early	Early	Early	Early	Early	Early
Virgin Trains East Coast	Early	Early	Early	Early	Early	Early	Early
East Midlands Trains [®]	Early	Early	Early	Early	Early	Early	Early
Great Western Railways	Late	Late	Early	Late	None	None	None
GTR(Great Northern)	Late	Late	None	None	Late	None	None
GTR (Thameslink)	Late	Late	None	None	Late	None	None
Grand Central	Early	Early	Early	Early	Early	Early	Early
Greater Anglia (AR)	Early	Early	Early	Early	Early	Early	Early
Greater Anglia (GE)	Early	Early	Early	Early	Early	Early	Early
Greater Anglia (WA)	Early	Early	Early	Early	Early	Early	Early
Heathrow Express	Early	Early	Early	Early	Early	Early	Early
Hull Trains [®]	Early	Early	Early	Early	Early	Early	Early
London Midland [®]	Met	Early	Early	Early	Early	Early	Early
London Overground	Met	Met	Early	Late	Late	Met	Met
Mersey rail	Early	Early	Early	Early	Early	Early	Early
Northern Rail (East)	Met	Late	Late	Late	Late	Early	Early
Northern Rail (West)	Met	Met	Late	Late	Late	Early	None
Scot Rail [®]	Met	Late	Early	Early	Late	Early	Early
South Western Railway	Early	Early	Early	Early	Early	Early	Early
South-eastern	Met	Late	Met	Met	Late	Met	Met
GTR (Southern)	Late	Late	None	None	Late	None	None
TfL Rail	Early	Early	Early	Early	Early	Early	Early
Trans Pennine [®]	Early	Met	Early	Early	Met	Early	Early
Virgin West Trains [®]	Early	Early	Early	Early	Early	Early	Early
Freightliner Intermodal	Early	Early	Early	Early	Early	Early	Early
Colas Rail	Early	Early	Early	Early	Early	Early	Early
DB Cargo	Early	Early	Early	Early	Early	Early	Early
GRAF	Early	Early	Early	Early	Early	Early	Early
Freightliner Heavy haul	Early	Early	Early	Early	Early	Early	Early
Direct rail Services	Early	Early	Early	Early	Early	Early	Early
Rail Ops Group	Early	Early	Early	Early	Early	Early	Early
Serco Caledonian Sleeper	Early	Early	Early	Early	Early	Met	Met

Operators published	8	9	10	11
	Publish	Publish	Publish	Publish
Arriva Trains Wales [®]	Met	Met	Met	Met
c2c	Met	Met	Met	Met
Chiltern Railways	Met	Met	Met	Met
CrossCountry [®]	Met	Met	Met	Met
Virgin Trains East Coast	Met	Met	Met	Met
East Midlands Trains [®]	Met	Met	Met	Met
Great Western Railways	Met	None	Met	None
GTR (Great Northern)	None	None	None	None
GTR (Thameslink)	None	None	None	None
Grand Central	Met	Met	Met	Met
Greater Anglia (AR)	Met	Met	Met	Met
Greater Anglia (GE)	Met	Met	Met	Met
Greater Anglia (WA)	Met	Met	Met	Met
Heathrow Express	Met	Met	Met	Met
Hull Trains [®]	Met	Met	Met	Met
London Midland [®]	Met	Met	Met	Met
London Overground	Met	Met	Met	Met
Mersey rail	Early	Met	Met	Met
Northern Rail (East)	Met	Met	Met	Met
Northern Rail (West)	Met	Met	Met	Met
Scot Rail [®]	Met	Met	Met	Met
South Western Railway	Met	Met	Met	Early
South-eastern	Met	Met	Met	Met
GTR (Southern)	None	None	None	None
TfL Rail	Met	Met	Met	Met
Trans Pennine [®]	Met	Met	Met	Met
Virgin West Trains [®]	Met	Met	Met	Met
Freightliner Intermodal	Early	Early	Met	Met
Colas Rail	Early	Early	Met	Met
DB Cargo	Early	Early	Met	Met
GRAF	Early	Early	Met	Met
Freightliner Heavy haul	Early	Early	Met	Met
Direct rail Services	Early	Early	Met	Met
Rail Ops Group	Early	Early	Met	Met
Serco Caledonian Sleeper	Met	Met	Met	Met

What are the risks to the plan

- Late notice change request to the access plan – good process in place
- Reliable delivery of Network Rail projects and any Operator plans
- Sufficient industry resource to deliver over the high summer period
- Pressure on planning teams across the network to deliver the recovery plan
- Robustness of May TT to avoid diverting resource to make changes
- Continuing development of the December 2018 TT – any specification changes likely to divert resource
- Preparation for May 2019 TT starts on 10 August

Avoiding any repeat.....

- Reliable delivery of schemes
- Evolution not revolution of TTs
- Early sight and acknowledgement of potential problems be they infrastructure or rolling stock
- Strict adherence to WTT development timeline
- Industry co-operation at all levels