



National Passenger Survey

TOC Report for Chiltern Railways

Spring 2011

Contacts:

David Greeno
Passenger Focus
1 Drummond Gate
London, SW1V 2QY

Tel: 0300 123 0837
Email: david.greeno@passengerfocus.org.uk

David Chilvers
BDRC Continental
Kingsbourne House
229-231 High Holborn
London, WC1V 7DA

Tel: 020 7490 9111
Email: dave.chilvers@bdrccontinental.com

Passengerfocus 
putting passengers first

Contents

1 Introduction

- 1.1 Methodology 2
- 1.2 Issues affecting fieldwork 3

2 Key results

- 2.1 Overall satisfaction and station factor results for Chiltern Railways 5
- 2.2 Train factor results for Chiltern Railways 6
- 2.3 Overall satisfaction and station factor results for London and South East 8
- 2.4 Train factor results for London and South East 9
- 2.5 Chiltern Railways performance versus London and South East 11
- 2.6 Building block/route data for Chiltern Railways 13

3 Passenger satisfaction trend charts

- 3.1 Trend charts of all passenger satisfaction results for Chiltern Railways 15

4 Managed versus non-managed stations

- 4.1 Station factor results for Chiltern Railways 26
- 4.2 Network Rail categorisation for Chiltern Railways 27

5 Peak/off-peak satisfaction

- 5.1 Peak/off peak satisfaction for Chiltern Railways 28
- 5.2 Peak/off peak satisfaction for London and South East 30

6 Sample profile

- 6.1 Weighted sample profile for Chiltern Railways 32
- 6.2 Weighted sample profile for London and South East 33
- 6.3 Station sample sizes for Chiltern Railways 34
- 6.4 Weighted sample composition for all TOCs 35
- 6.5 Unweighted sample composition for all TOCs 36

7 Technical appendix

- 7.1 Standard reports produced for NPS 37
- 7.2 Rail sectors 38

Questionnaires are normally handed out at stations to customers about to board a train.

A reply paid envelope is provided for returning questionnaires.

Each Train Operating Company (TOC) is sampled separately. Interviewers are given a number of questionnaires to hand out at a station.

At Gatwick and Heathrow Airports and for some shifts at certain London termini, questionnaires are handed out to passengers of a specific TOC. From Autumn 2003 onwards, at all other stations, questionnaires are handed out to passengers of any TOC (in the past, these were also targeted).

The number of questionnaires handed out will depend on:

- the size of station
- time of day
- length of shift

TOC data is compiled to provide a national sample.

Fieldwork is carried out each Spring (February/March) and Autumn (September/October). Up to Spring 2003, fieldwork took place over 3 weeks.

In Autumn 2003, the fieldwork was extended to an 11 week period, from 26 August to 9 November, to provide a better representation of journeys.

Quotas for returned questionnaires are set overall and by weekday/weekend, journey purpose and station size.

All data for a TOC in this Report is weighted up to the number of passenger journeys annually on the TOC and the profile of those journeys by:

- weekday/weekend
- journey purpose (Commuter, Business, Leisure)
- station size (this profile is applied for each TOC building block)

The data for number of journeys and profiles by these variables was generated from ORR data (2010).

The stations for each TOC were stratified by number of passengers and a number of stations in each size stratum is sampled.

This sample design and weighting ensures that data is representative of all passenger journeys made on each TOC.

National results are constructed by combining data for all TOCs together, weighting by number of journeys.

From Autumn 2007 standard region definitions have been used replacing older rail regions. Analysis for the old regions is available on request.

For more details of NPS methodology, visit www.passengerfocus.org.uk

Spring 2011 (Wave 24)

Wave 24 fieldwork (Main and Boost) was undertaken between 31st January 2011 and 15th April 2011. Top up interviews were run within the last 3 weeks of the fieldwork period.

Closure of the Wrexham and Shropshire Franchise prior to the start of fieldwork meant that no shifts were conducted on train or at station for this TOC.

Due to strike action with Arriva Trains Wales a small number of weekend shifts had to be rescheduled for later on in the fieldwork period. Other than this strike action, and clashes with Virgin Trains' own fieldwork and a small amount of engineering work mainly affecting London Overground shifts there was little disruption to the field schedule. Whenever possible the shifts went ahead as planned if there were still train services running.

The results achieved by London Midland are likely to have been affected by an industrial dispute which resulted in the cancellation of a significant number of trains through the full survey period.

One fieldworker was commended on his behaviour by First TransPennine Express after saving the life of a young female passenger by preventing her from falling onto the track.

Autumn 2010 (Wave 23)

Fieldwork (Main and Boost) was undertaken between 2nd September 2010 and 15th November 2010. Top up shifts were run between 14th October and the 26th November 2010.

Planned engineering works meant that some shifts were rescheduled. As usual, shifts were only rescheduled if the engineering work caused a station or line closure. Whenever possible the shifts went ahead as planned if there were still train services running.

Engineering works particularly affected shifts scheduled to be conducted on weekends both on train and at stations run by London Overground and Wrexham and Shropshire respectively. All shifts were rescheduled and conducted on the weekends where possible.

Due to shortfall on returns on certain TOCs the fieldwork period was extended from the 15th of November to the 26th November.

Other than the Papal visit, and the Conservative Party conference there were no other events that caused major disruptions to the fieldwork schedule.

Spring 2010 (Wave 22)

Fieldwork was undertaken between 31 January 2009 and 27 March 2009. Top up shifts were run between 28 March and 9 April 2009. The main fieldwork period was similar to previous years, but the top-up period was slightly extended because of problems encountered earlier in the fieldwork period.

Extreme weather - in particular, heavy snow during the 1st week of February - caused a lot of disruption to the fieldwork schedule. Over 50% of all shifts originally scheduled for 2-6 February had to be postponed until later in the fieldwork period.

As always, planned engineering works meant that some shifts were rescheduled. As usual, shifts were only rescheduled if the engineering work caused a station or line closure. Whenever possible the shifts went ahead as planned if there were still train services running.

Over-running engineering work meant that further shifts had to be rescheduled during the course of the fieldwork, but this was not a great problem.

A few shifts were rescheduled to avoid clashing with Six Nations rugby matches, but sporting events did not cause much disruption to the original schedule.

Autumn 2009 (Wave 21)

Fieldwork was undertaken between 1 September 2009 and 9 November 2009. Top up shifts were run between 10 November and 15 November 2009.

Planned engineering works meant that some shifts were rescheduled. As usual, shifts were only rescheduled if the engineering work caused a station or line closure. Whenever possible the shifts went ahead as planned if there were still train services running.

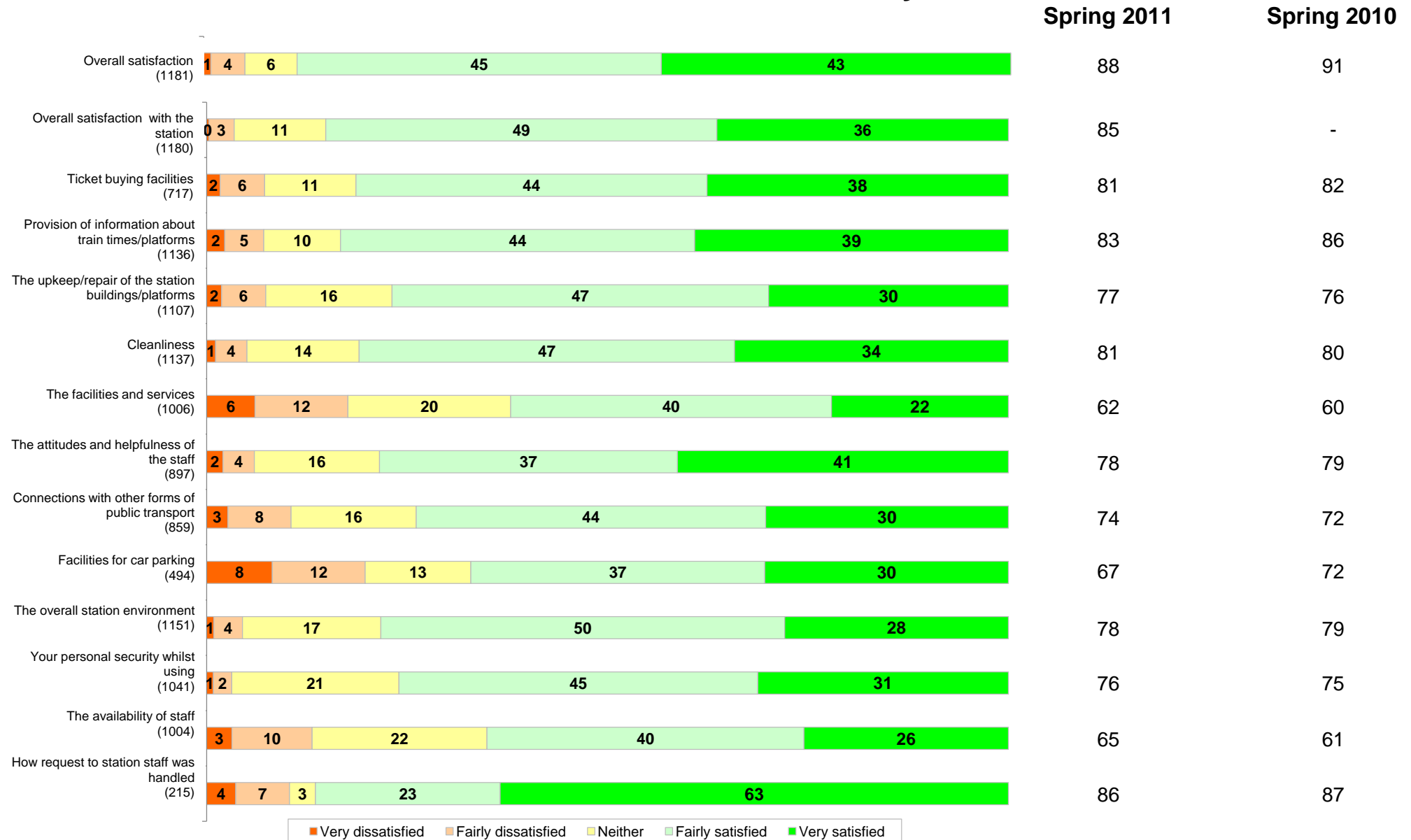
Some shifts had to be rescheduled because of heavy rain and line damage caused by flooding.

An increase in the number of flu infections among fieldworkers led to an increased number of shifts being rescheduled because of illness.

At 95% confidence level:
+ denotes significant increase
- denotes significant decrease

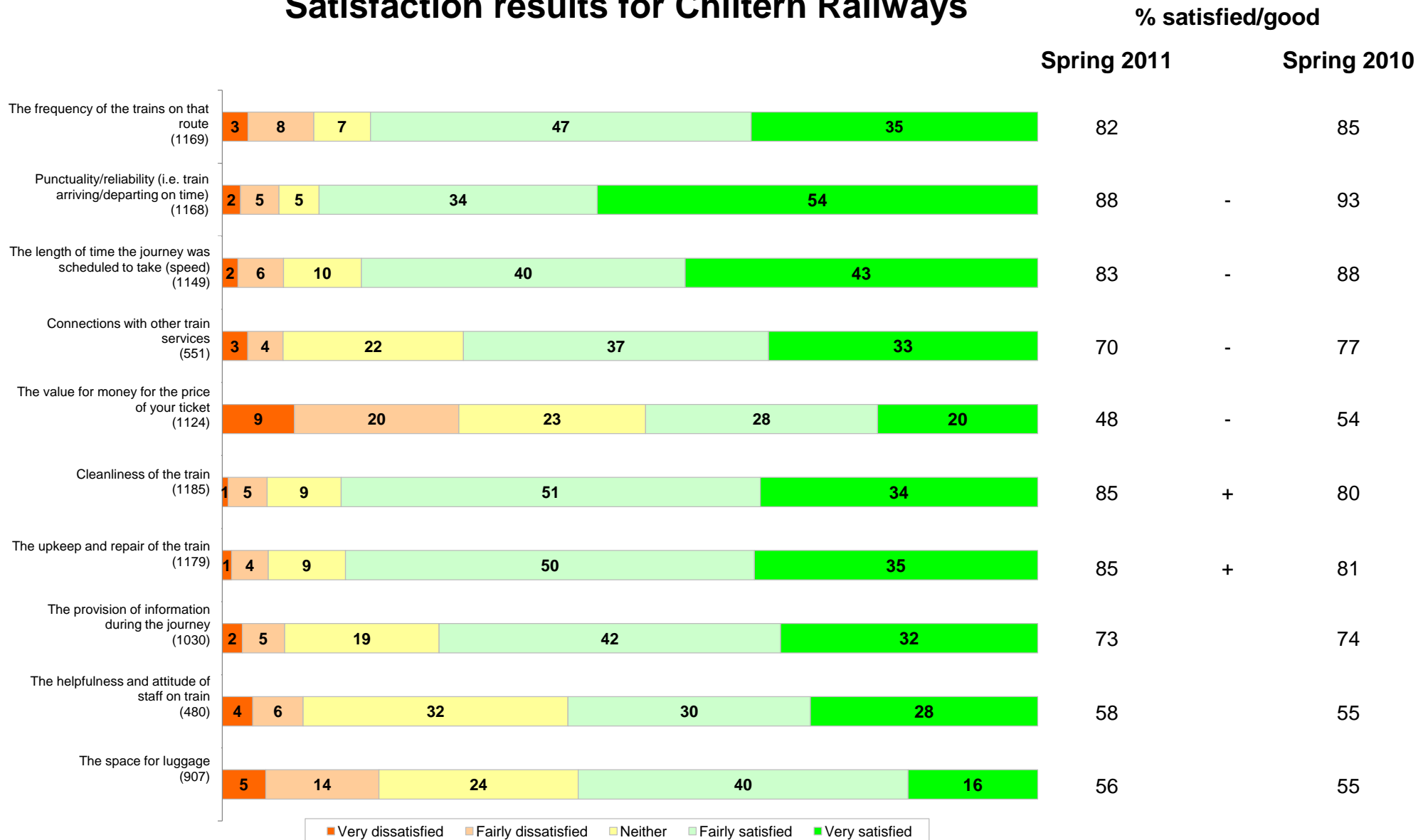
% satisfied/good

Satisfaction results for Chiltern Railways



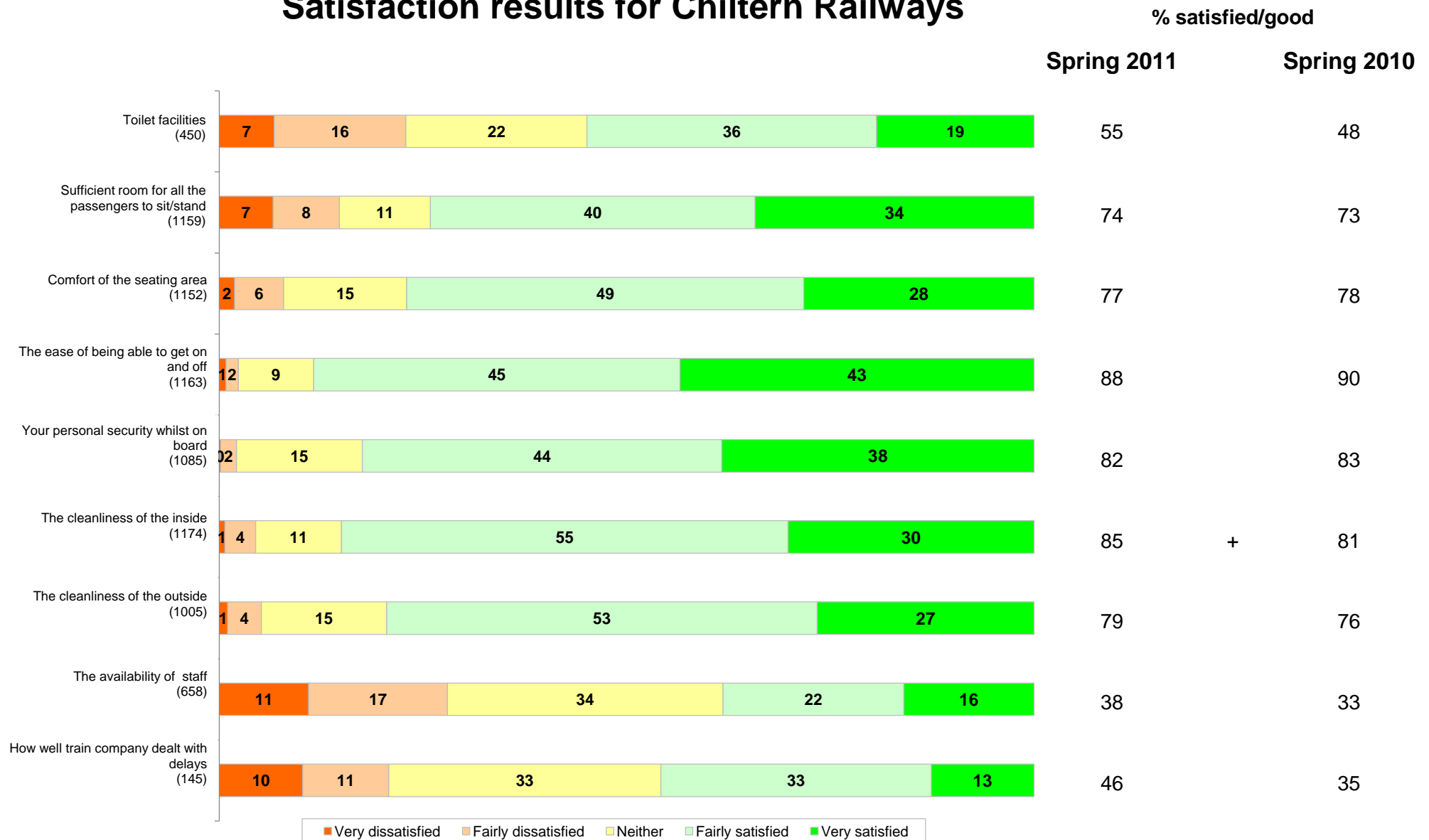
At 95% confidence level:
+ denotes significant increase
- denotes significant decrease

Satisfaction results for Chiltern Railways



At 95% confidence level:
+ denotes significant increase
- denotes significant decrease

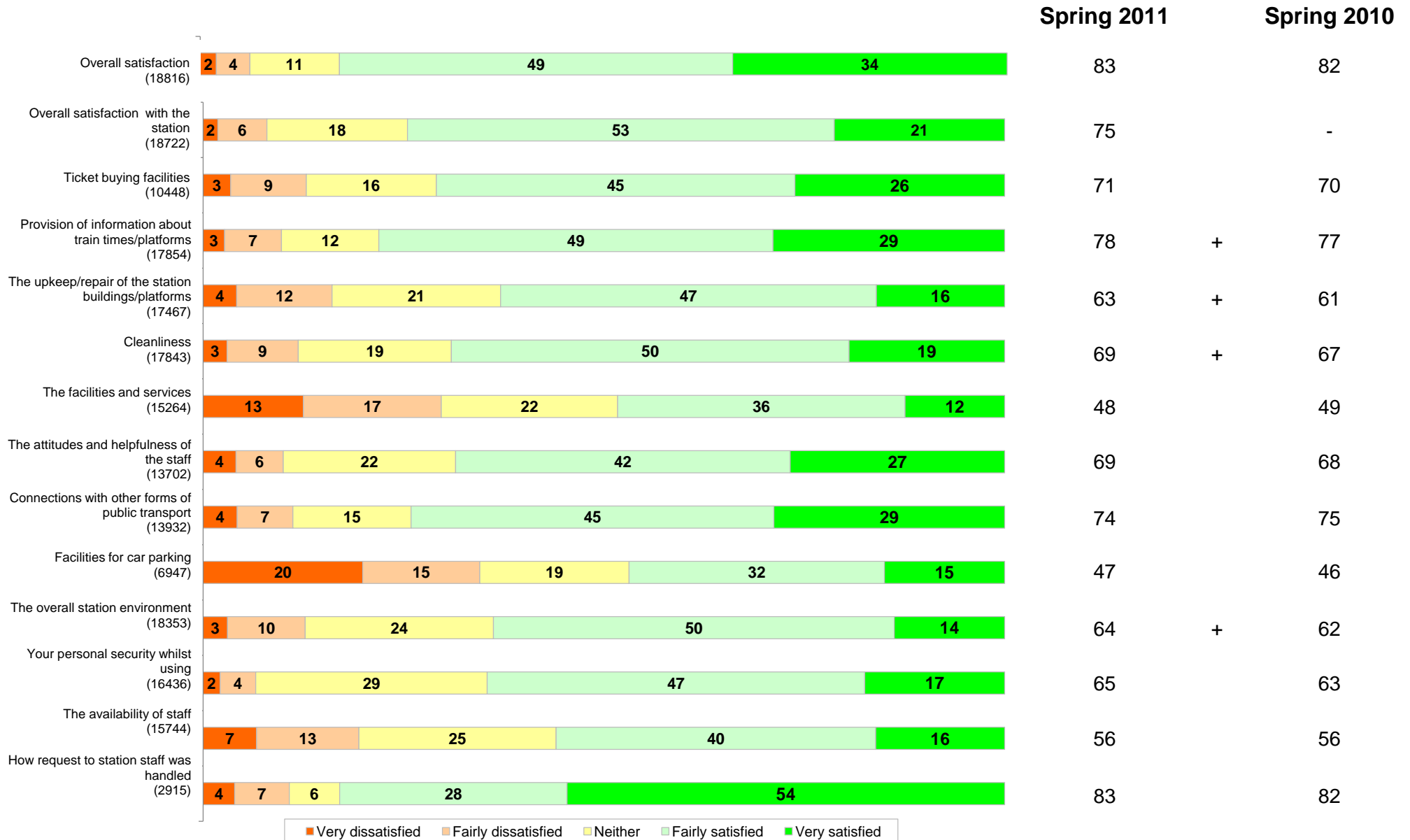
Satisfaction results for Chiltern Railways



At 95% confidence level:
 + denotes significant increase
 - denotes significant decrease

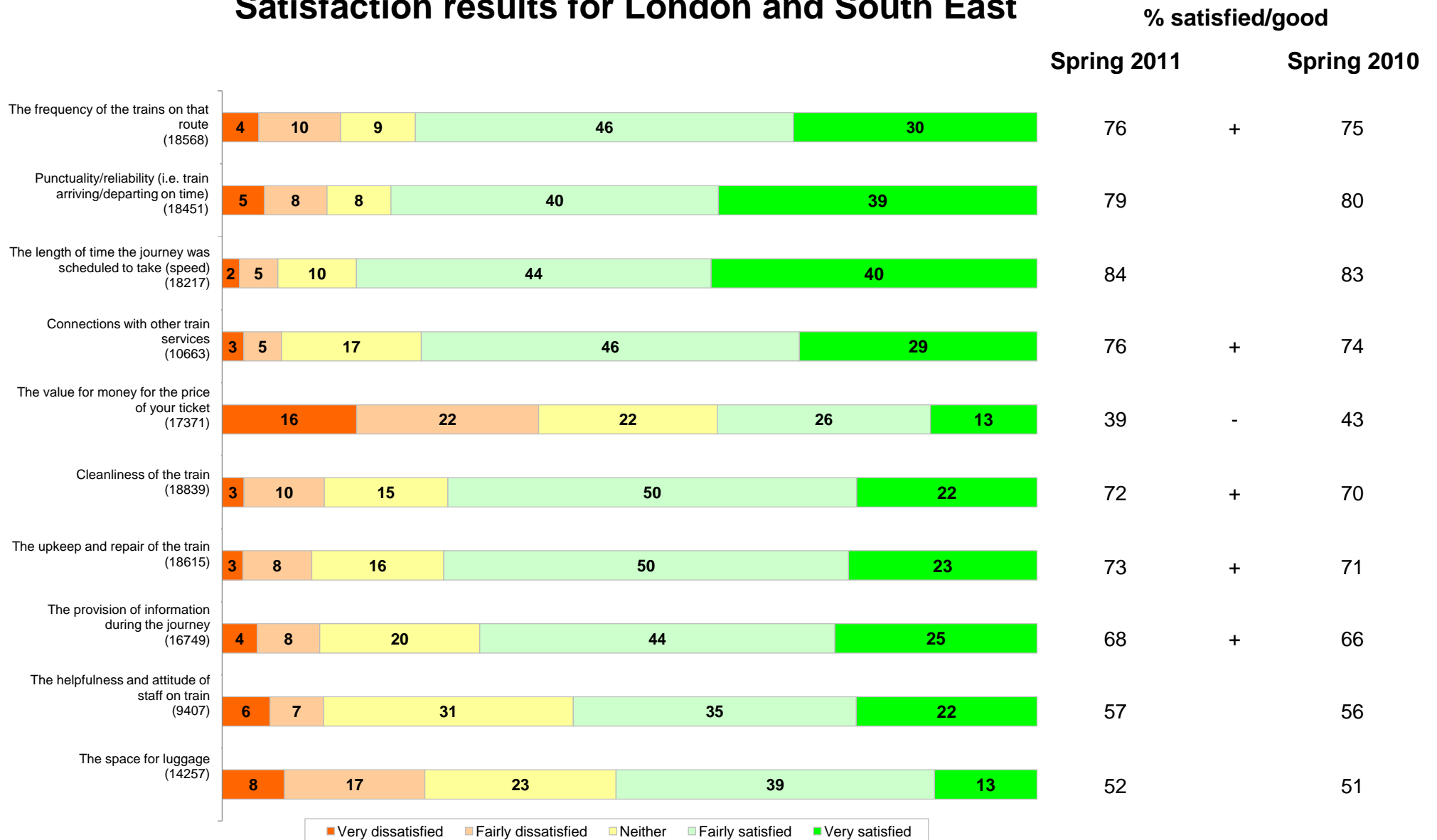
% satisfied/good

Satisfaction results for London and South East



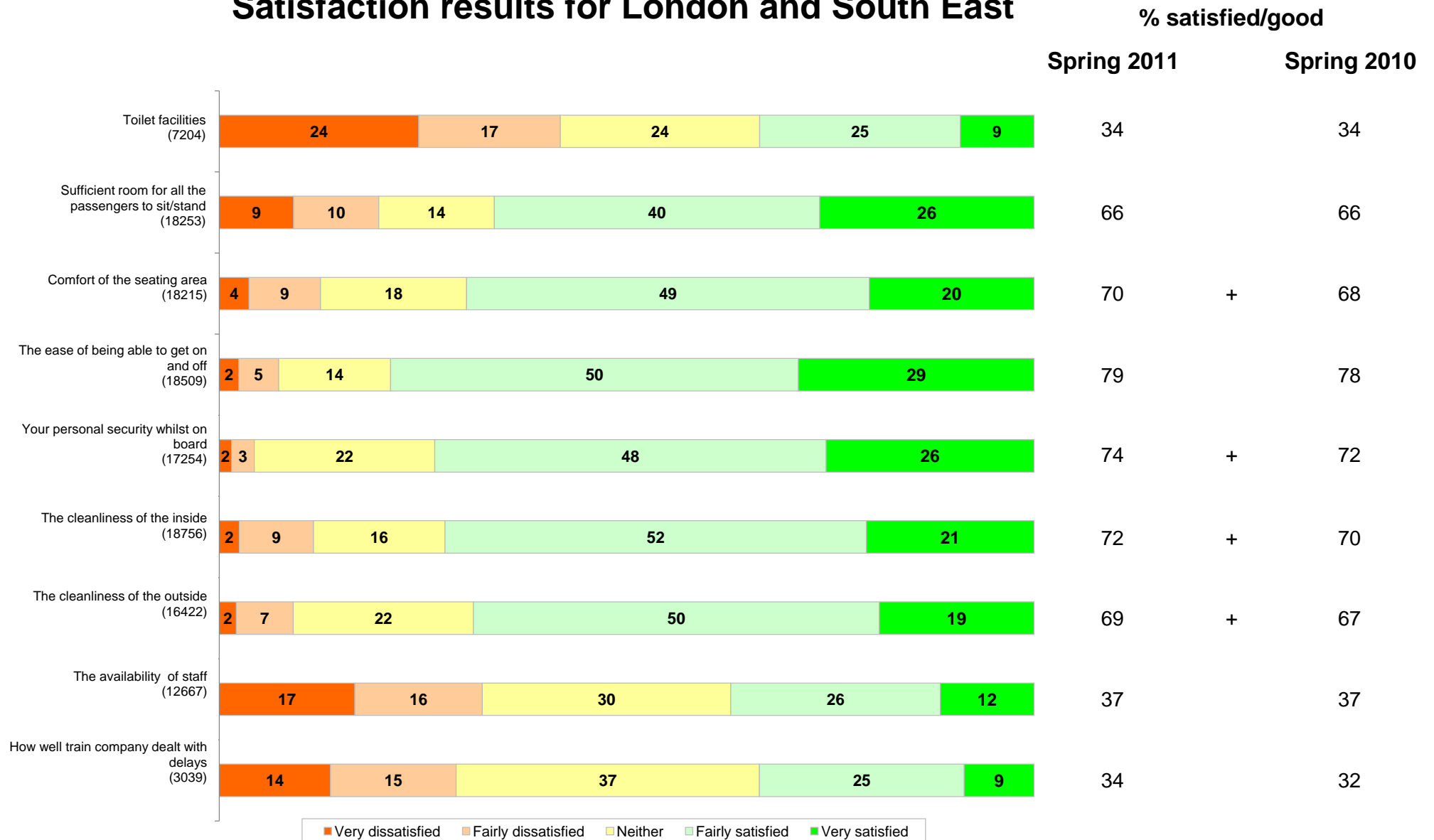
At 95% confidence level:
+ denotes significant increase
- denotes significant decrease

Satisfaction results for London and South East



At 95% confidence level:
+ denotes significant increase
- denotes significant decrease

Satisfaction results for London and South East



Chiltern Railways performance versus London and South East

	TOC	Sector	TOC Index
Overall satisfaction	88	83	107%
Overall satisfaction with the station	85	75	114%
Ticket buying facilities	81	71	115%
Provision of information about train times/platforms	83	78	107%
The upkeep/repair of the station buildings/platforms	77	63	122%
Cleanliness	81	69	117%
The facilities and services	62	48	129%
The attitudes and helpfulness of the staff	78	69	115%
Connections with other forms of public transport	74	74	100%
Facilities for car parking	67	47	143%
Overall environment	78	64	123%
Your personal security whilst using	76	65	118%
The availability of staff	65	56	116%
How request to station staff was handled	86	83	104%

Chiltern Railways performance versus London and South East

	TOC	Sector	TOC Index
The frequency of the trains on that route	82	76	107%
Punctuality/reliability (i.e. the train arriving/departing on time)	88	79	111%
The length of time the journey was scheduled to take (speed)	83	84	99%
Connections with other train services	70	76	93%
The value for money for the price of your ticket	48	39	123%
Cleanliness of the train	85	72	118%
Upkeep and repair of the train	85	73	117%
The provision of information during the journey	73	68	107%
The helpfulness and attitude of staff on train	58	57	101%
The space for luggage	56	52	109%
The toilet facilities	55	34	163%
Sufficient room for all passengers to sit/stand	74	66	112%
The comfort of the seating area	77	70	111%
The ease of being able to get on and off	88	79	112%
Your personal security on board	82	74	112%
The cleanliness of the inside	85	72	118%
The cleanliness of the outside	79	69	115%
The availability of staff	38	37	103%
How well train company deals with delays	46	34	136%

Building block/route data for Chiltern Railways

	North	South
Overall satisfaction	88	89
Overall satisfaction with the station	80	87
Ticket buying facilities	87	80
Provision of information about train times/platforms	81	84
The upkeep/repair of the station buildings/platforms	74	78
Cleanliness	77	82
The facilities and services	55	64
The attitudes and helpfulness of the staff	79	78
Connections with other forms of public transport	66	76
Facilities for car parking	72	65
Overall environment	70	81
Your personal security whilst using	74	77
The availability of staff	66	65
How request to station staff was handled	91	84

Building block/route data for Chiltern Railways

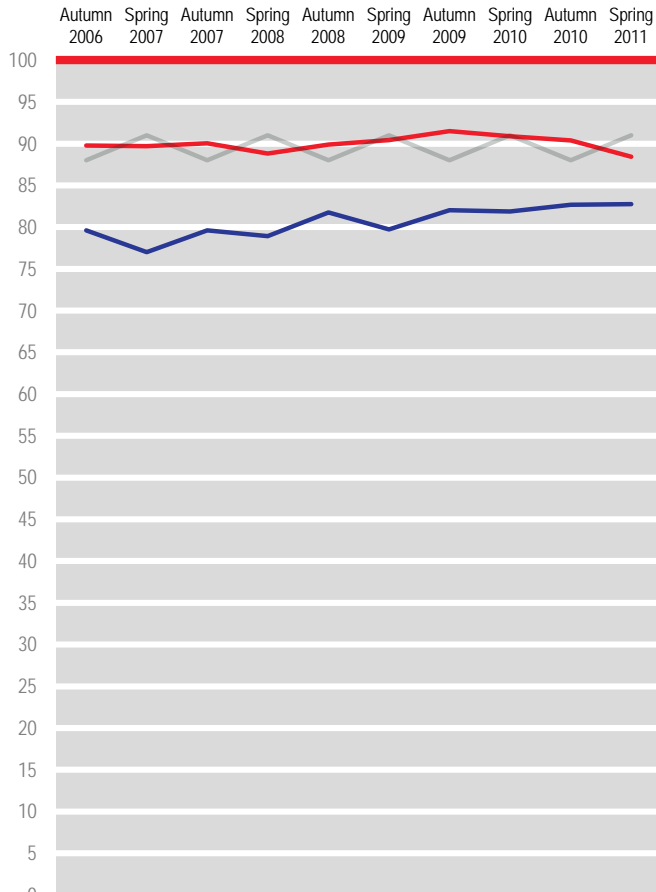
	North	South
The frequency of the trains on that route	86	80
Punctuality/reliability (i.e. the train arriving/departing on time)	87	88
The length of time the journey was scheduled to take (speed)	88	81
Connections with other train services	83	65
The value for money for the price of your ticket	61	43
Cleanliness of the train	88	85
Upkeep and repair of the train	84	85
The provision of information during the journey	80	71
The helpfulness and attitude of staff on train	70	49
The space for luggage	63	54
The toilet facilities	60	52
Sufficient room for all passengers to sit/stand	79	72
The comfort of the seating area	80	76
The ease of being able to get on and off	90	88
Your personal security on board	88	81
The cleanliness of the inside	87	84
The cleanliness of the outside	80	79
The availability of staff	55	29
How well train company deals with delays	52	43

Overall satisfaction

(1181)

Percentage of passengers satisfied 2006 to 2011

— Chiltern Railways
— London and South East
— Benchmark



Target 90

Overall station satisfaction

(1180)

Percentage of passengers satisfied 2006 to 2011

— Chiltern Railways — London and South East



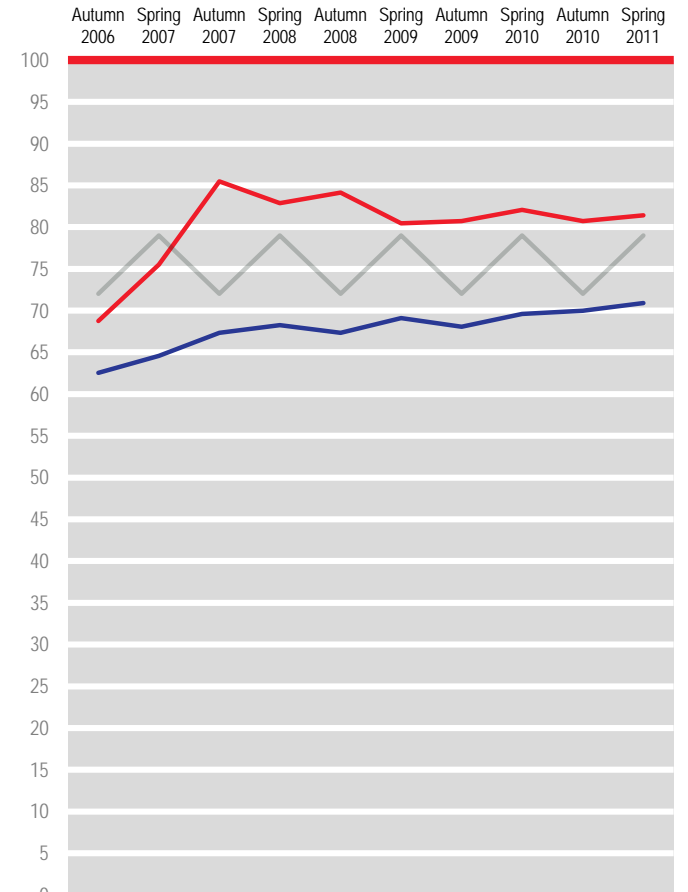
N.B. Benchmarks and targets are only shown for applicable factors

Ticket buying facilities

(717)

Percentage of passengers satisfied 2006 to 2011

— Chiltern Railways
— London and South East
— Benchmark



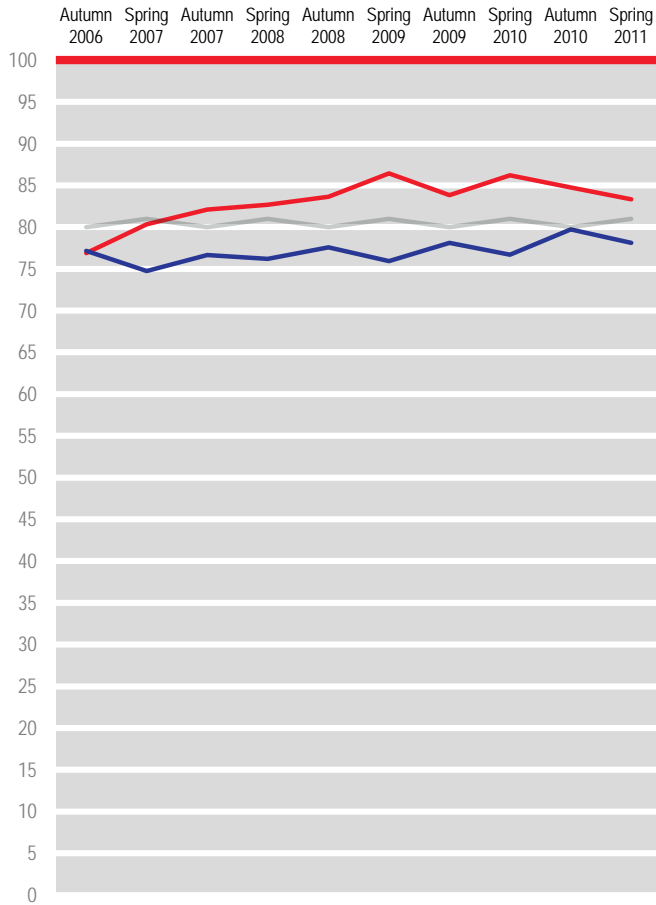
Target 78

Provision of information about train times/platforms

(1136)

Percentage of passengers satisfied 2006 to 2011

— Chiltern Railways
— London and South East
— Benchmark



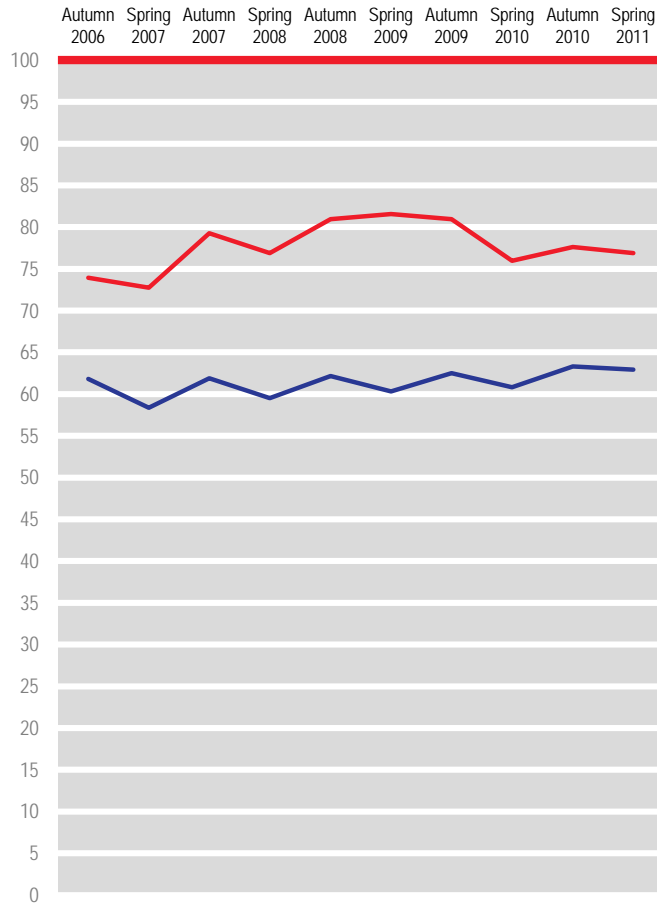
Target 82

The upkeep/repair of the station building/platforms

(1107)

Percentage of passengers satisfied 2006 to 2011

— Chiltern Railways — London and South East



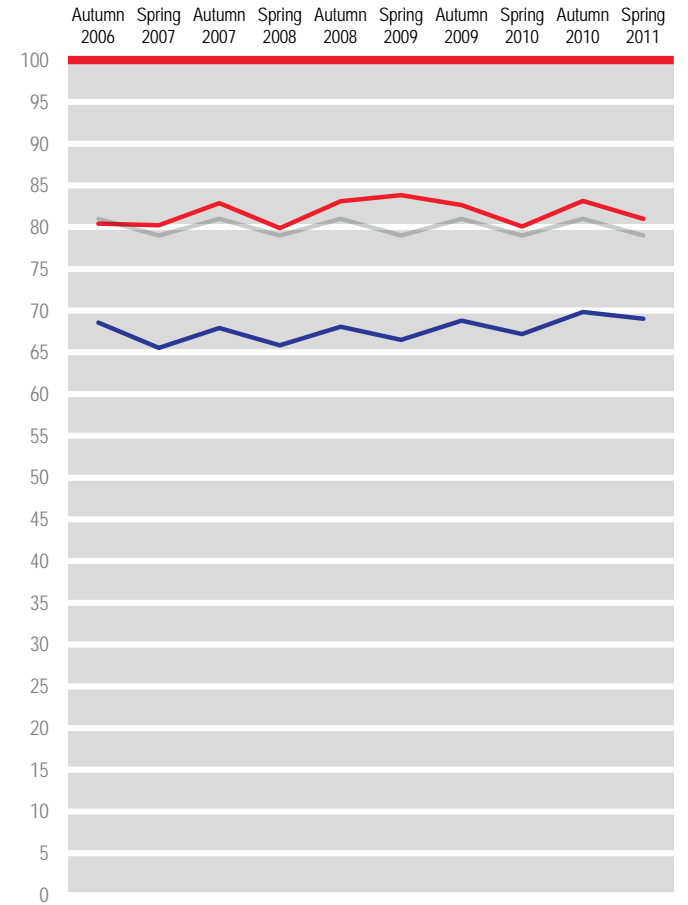
N.B. Benchmarks and targets are only shown for applicable factors

Cleanliness of the station

(1137)

Percentage of passengers satisfied 2006 to 2011

— Chiltern Railways
— London and South East
— Benchmark

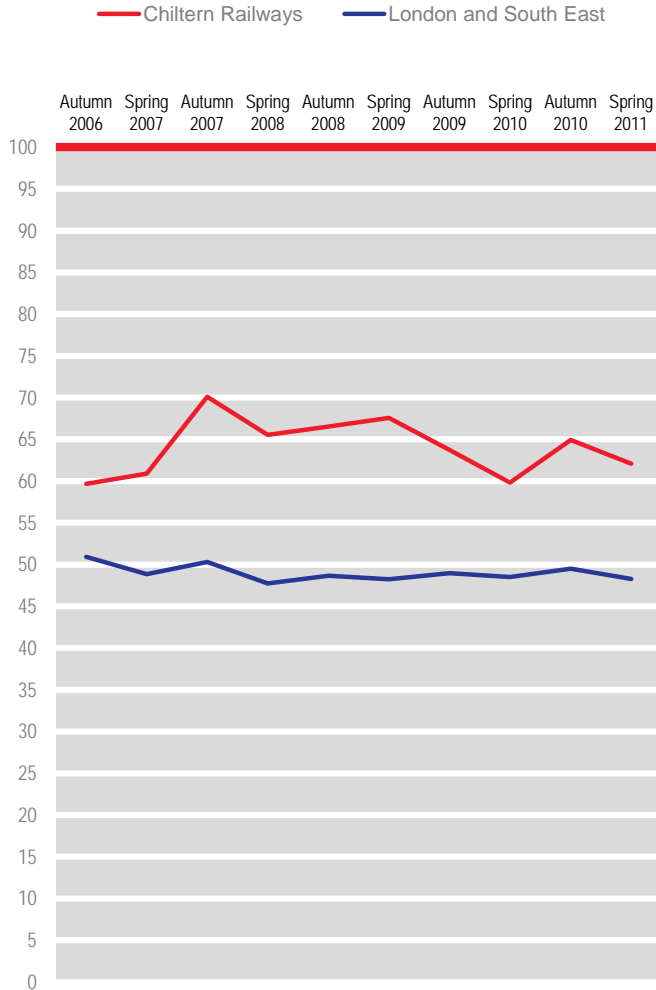


Target 82

The facilities and services at the station

(1006)

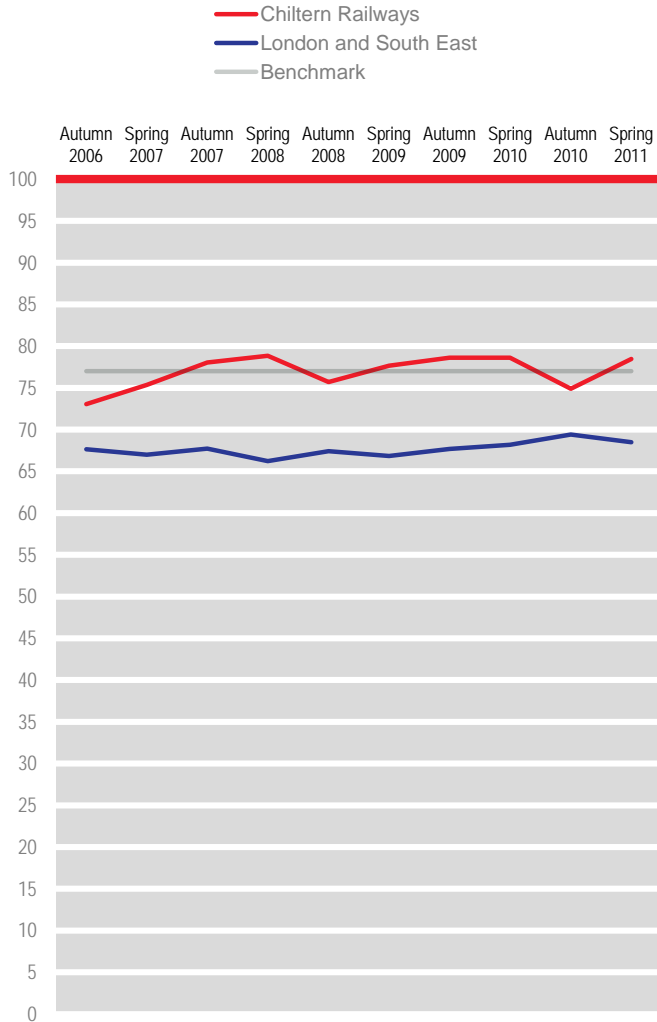
Percentage of passengers satisfied 2006 to 2011



The attitudes and helpfulness of the staff at the station

(897)

Percentage of passengers satisfied 2006 to 2011

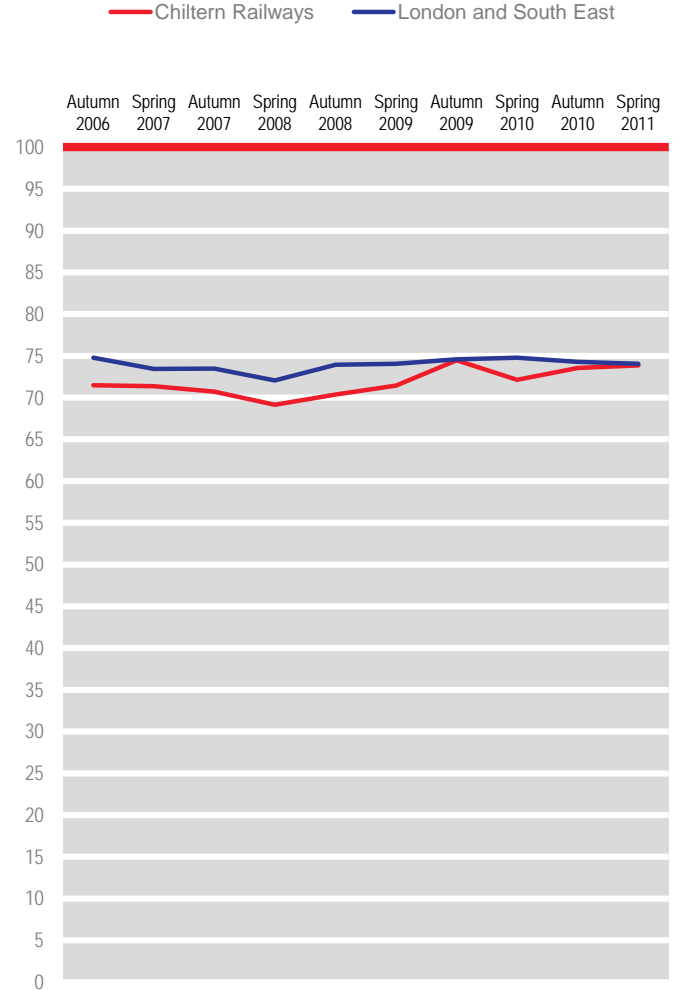


Target 79

Connections with other forms of public transport from the station

(859)

Percentage of passengers satisfied 2006 to 2011

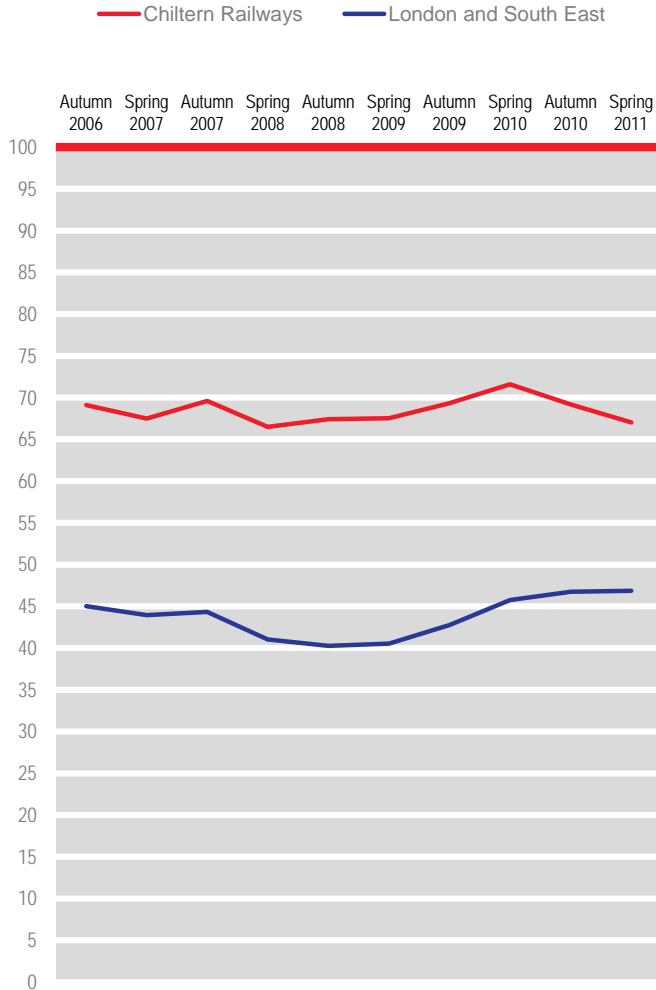


N.B. Benchmarks and targets are only shown for applicable factors

Facilities for car parking at the station

(494)

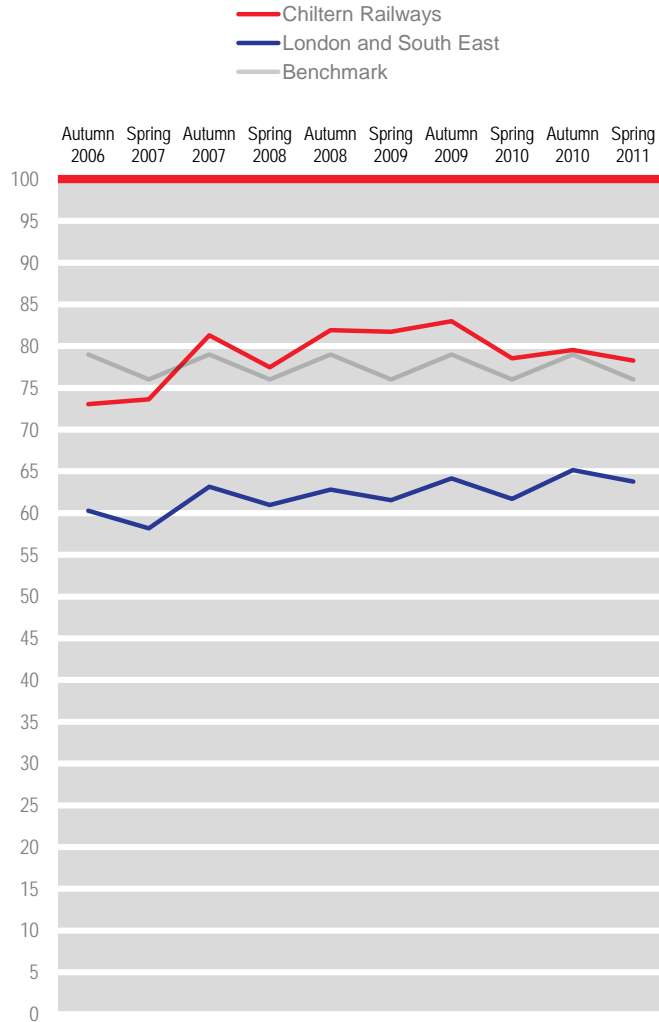
Percentage of passengers satisfied 2006 to 2011



Overall station environment

(1151)

Percentage of passengers satisfied 2006 to 2011



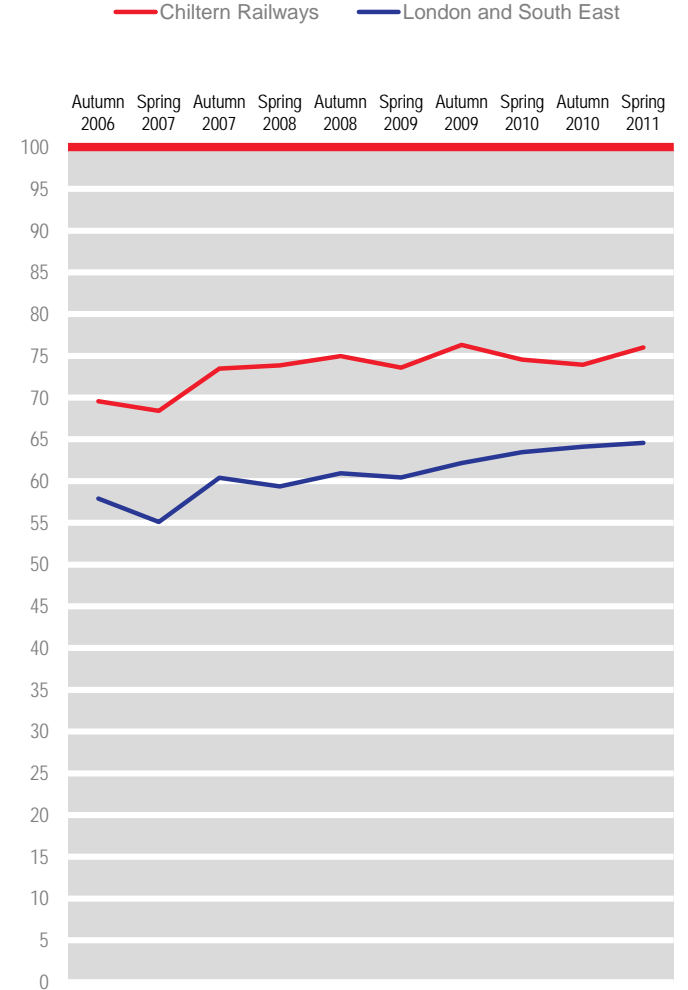
Target 80

N.B. Benchmarks and targets are only shown for applicable factors

Your personal security whilst using the station

(1041)

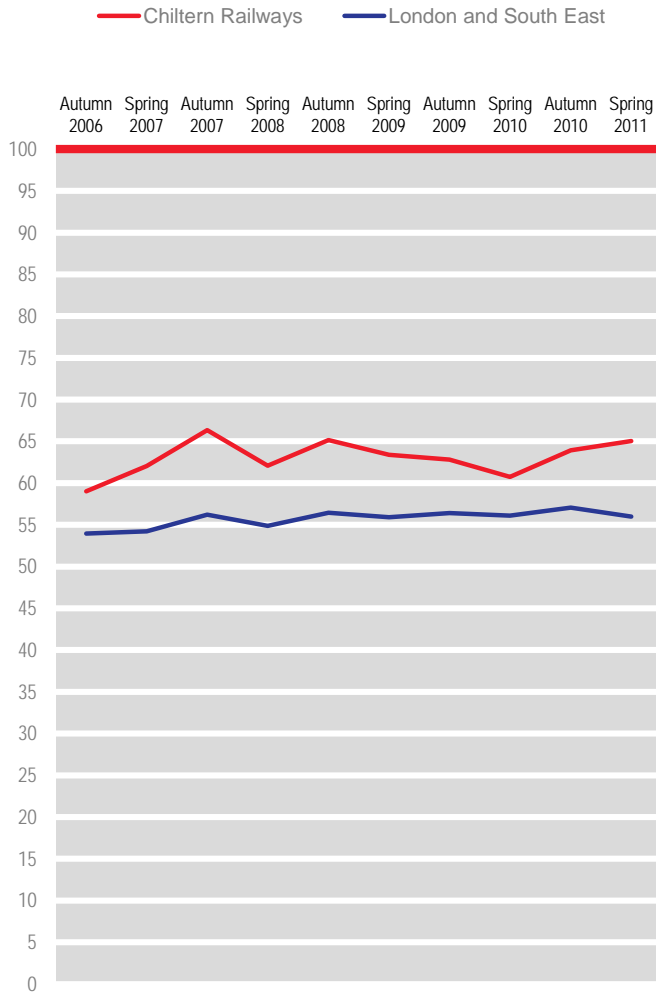
Percentage of passengers satisfied 2006 to 2011



The availability of staff at the station

(1004)

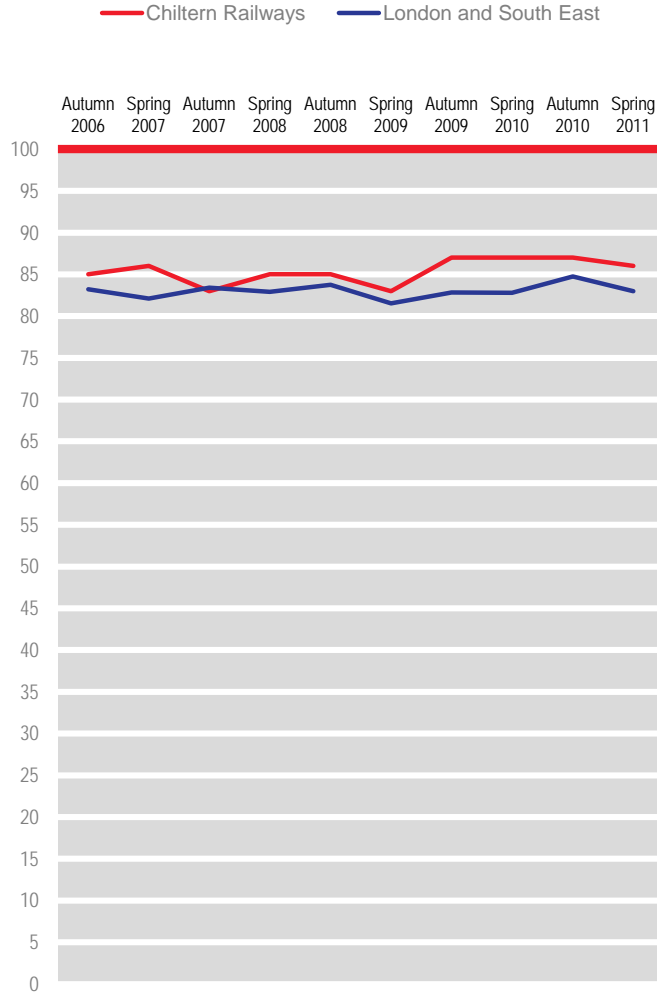
Percentage of passengers satisfied 2006 to 2011



How request to station staff was handled

(215)

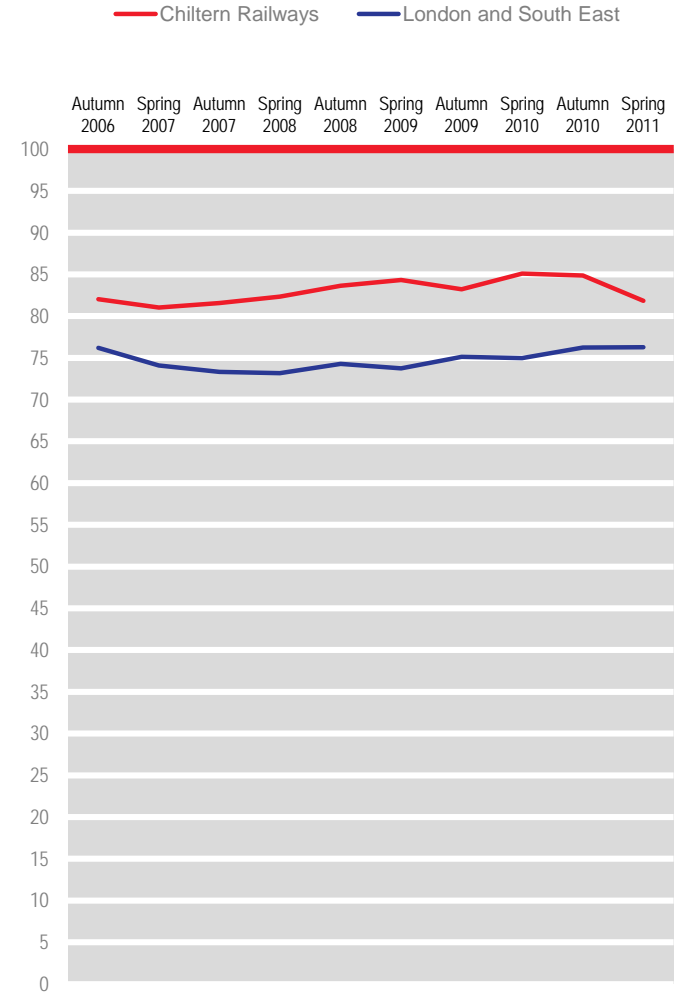
Percentage of passengers satisfied 2006 to 2011



The frequency of trains on that route

(1169)

Percentage of passengers satisfied 2006 to 2011

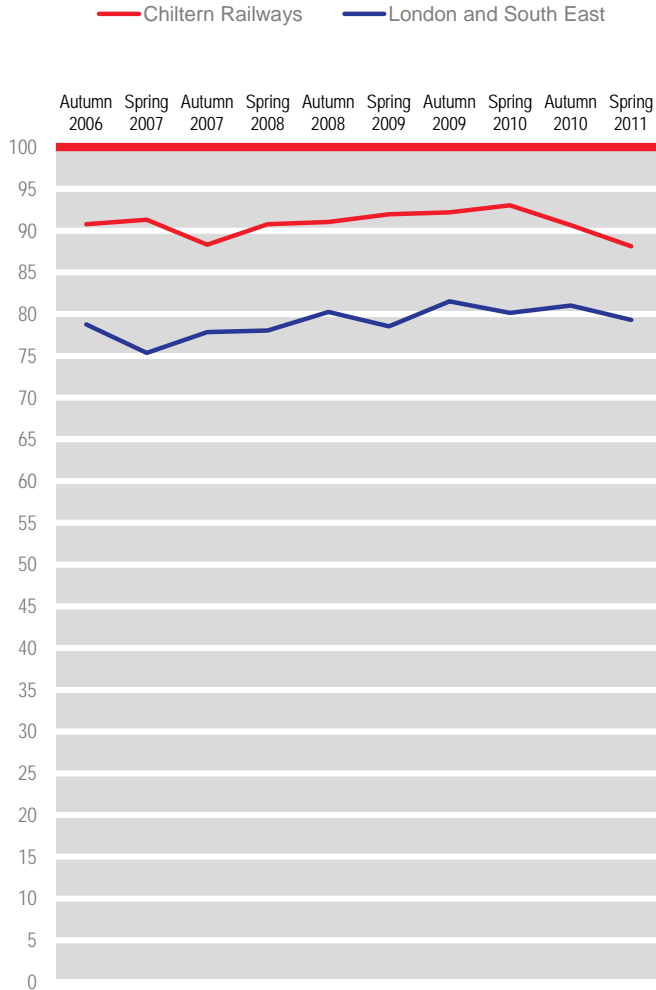


N.B. Benchmarks and targets are only shown for applicable factors

Punctuality/reliability (i.e. train arriving/departing on time)

(1168)

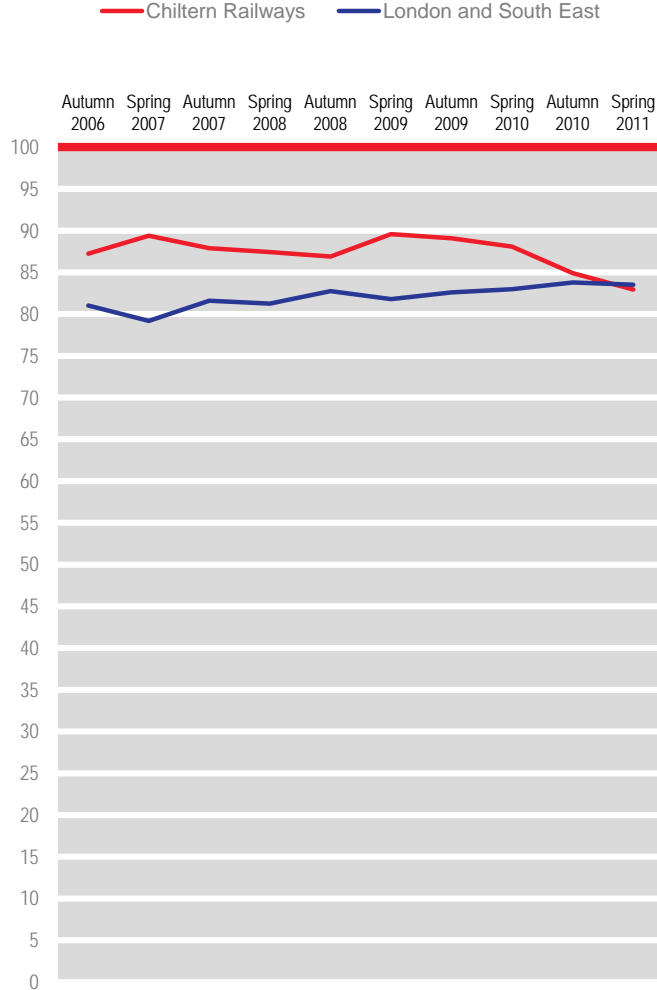
Percentage of passengers satisfied 2006 to 2011



The length of time the journey was scheduled to take (speed)

(1149)

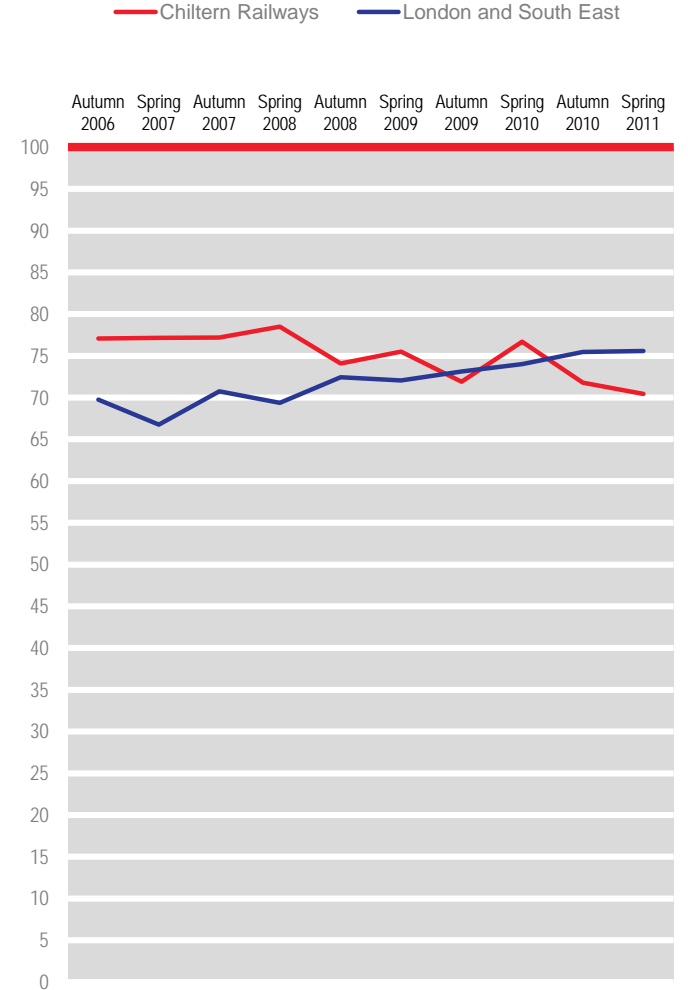
Percentage of passengers satisfied 2006 to 2011



Connections with other train services

(551)

Percentage of passengers satisfied 2006 to 2011

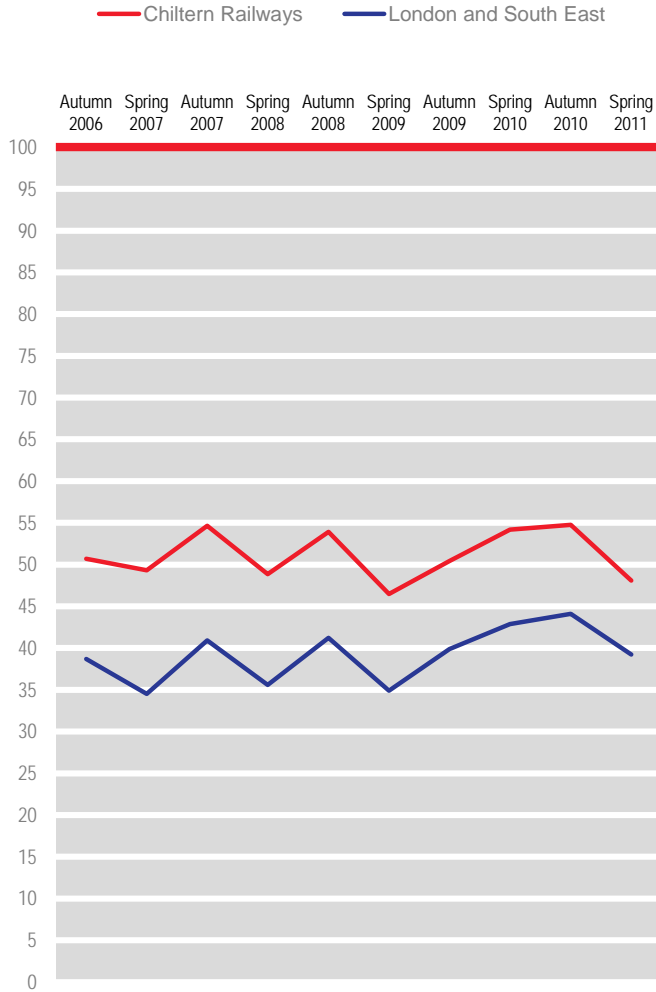


N.B. Benchmarks and targets are only shown for applicable factors

The value for money for the price of your ticket

(1124)

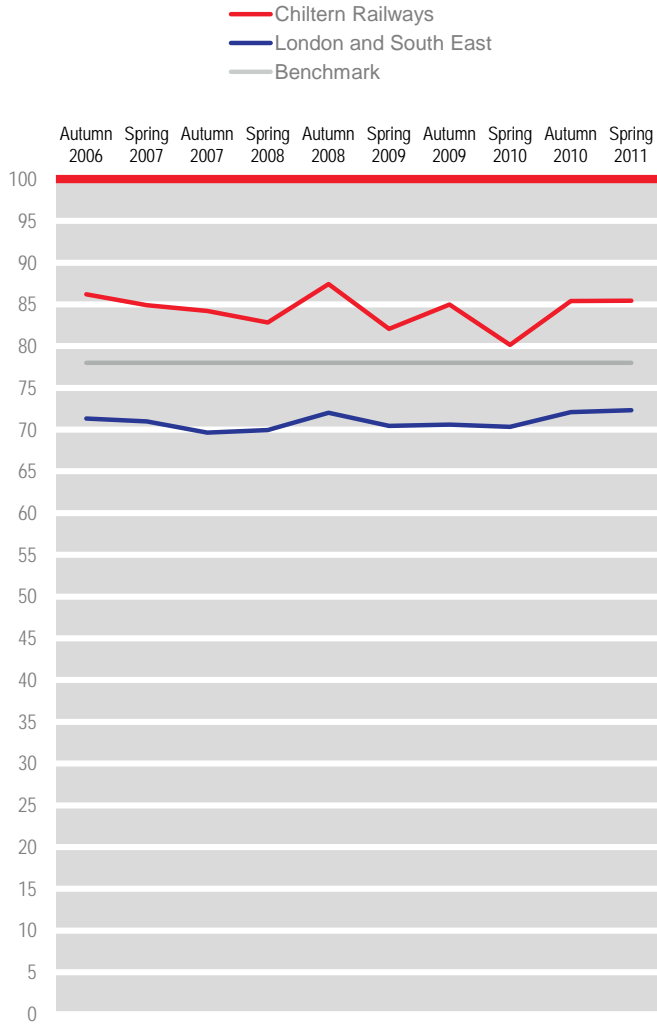
Percentage of passengers satisfied 2006 to 2011



Cleanliness of the train

(1185)

Percentage of passengers satisfied 2006 to 2011

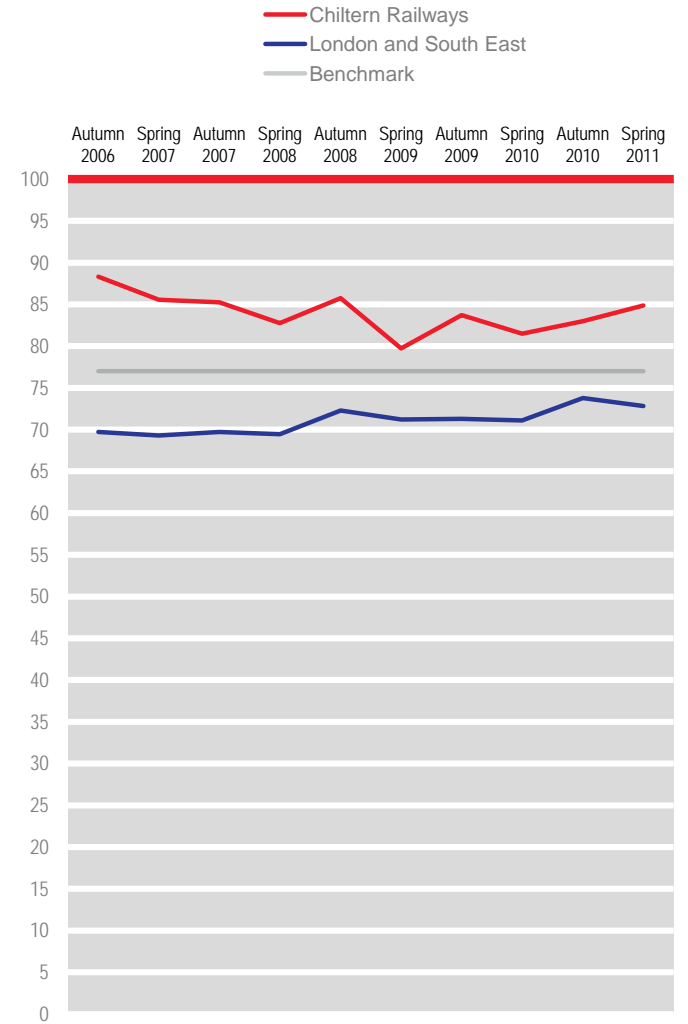


Target 80

Upkeep and repair of the train

(1179)

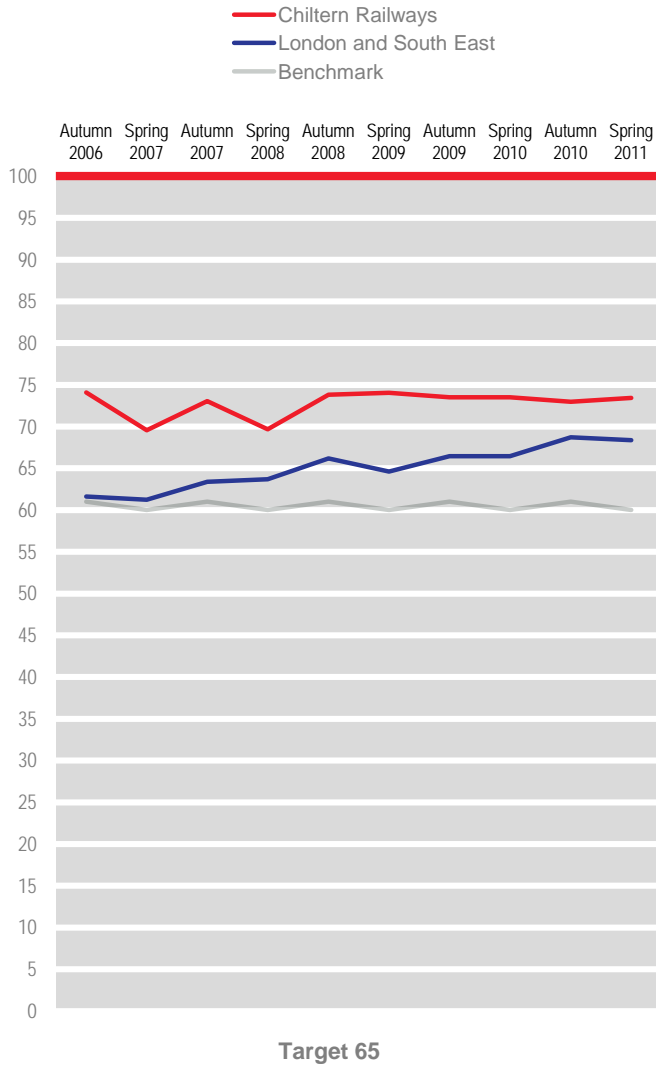
Percentage of passengers satisfied 2006 to 2011



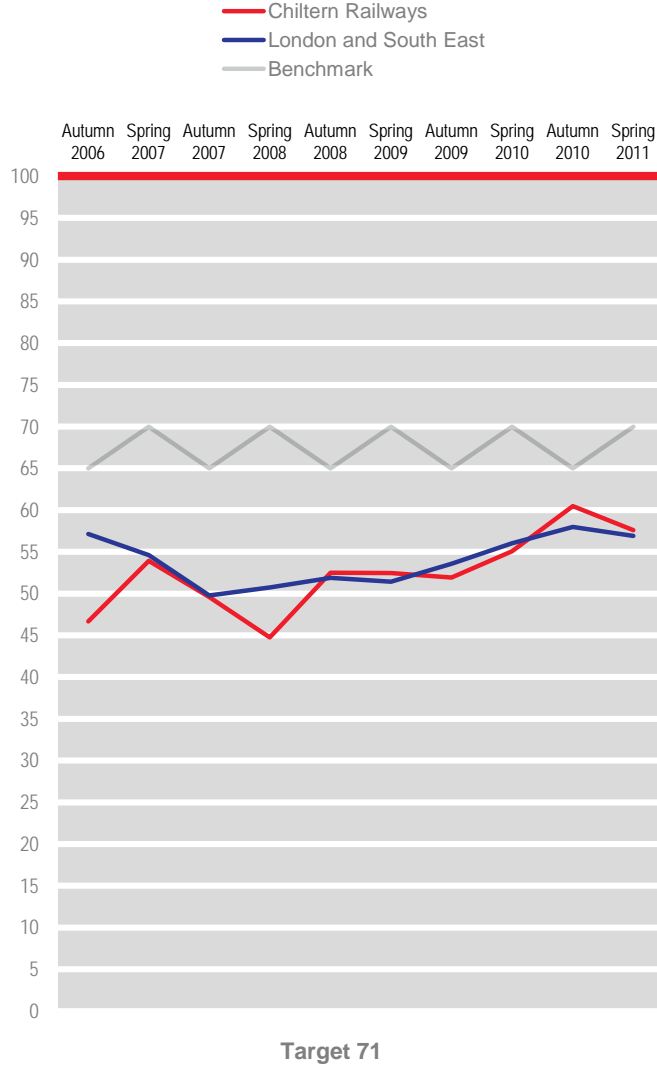
Target 79

N.B. Benchmarks and targets are only shown for applicable factors

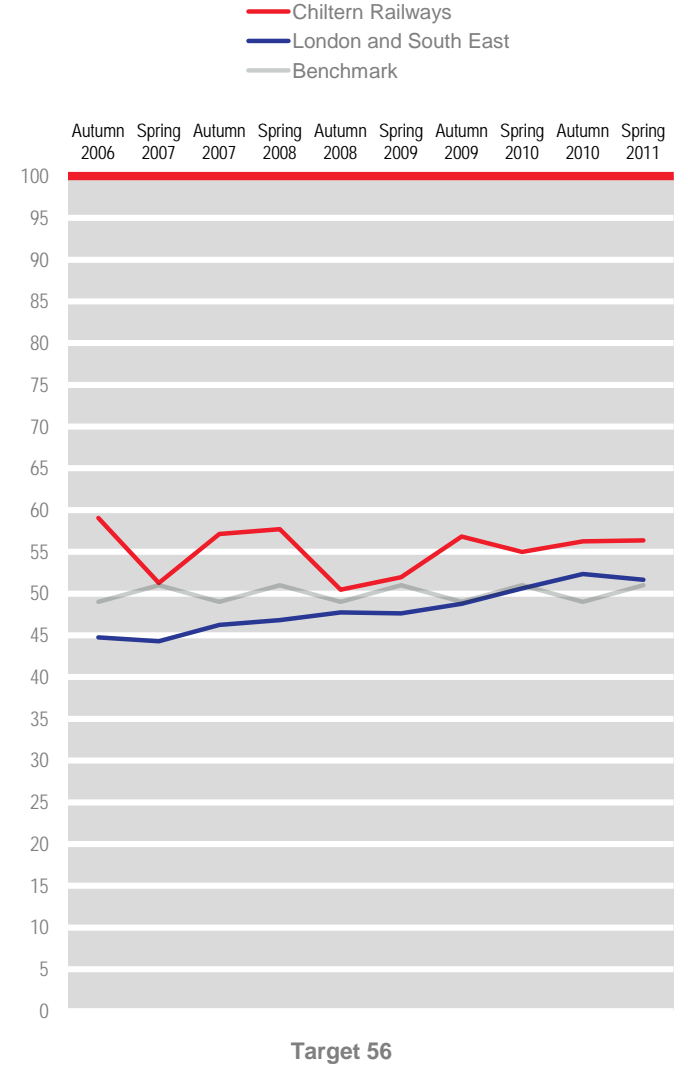
The provision of information during the journey (1030)
Percentage of passengers satisfied 2006 to 2011



The helpfulness and attitude of staff on train (480)
Percentage of passengers satisfied 2006 to 2011



The space for luggage (907)
Percentage of passengers satisfied 2006 to 2011



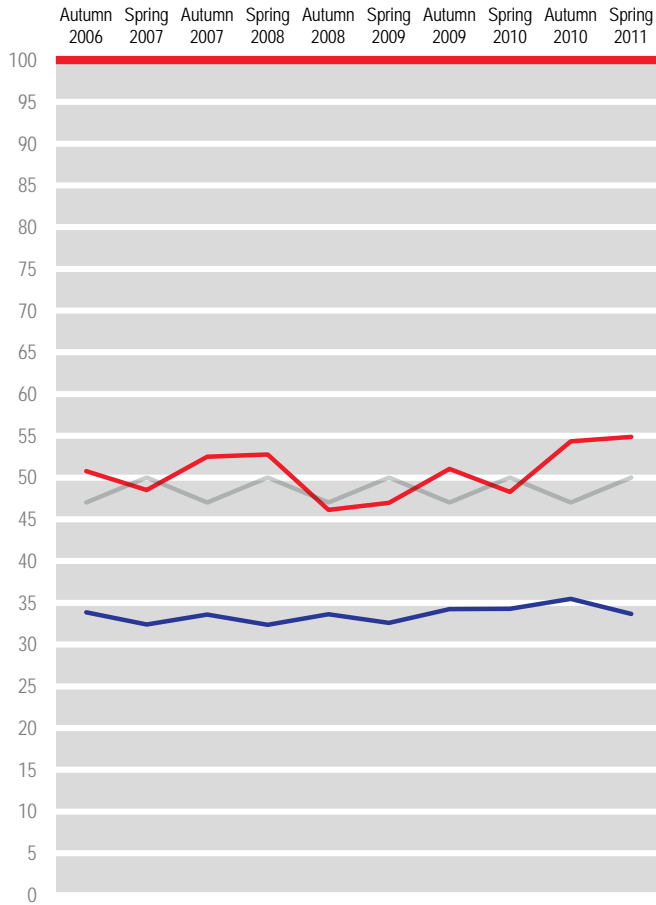
N.B. Benchmarks and targets are only shown for applicable factors

Toilet facilities on train

(450)

Percentage of passengers satisfied 2006 to 2011

— Chiltern Railways
— London and South East
— Benchmark



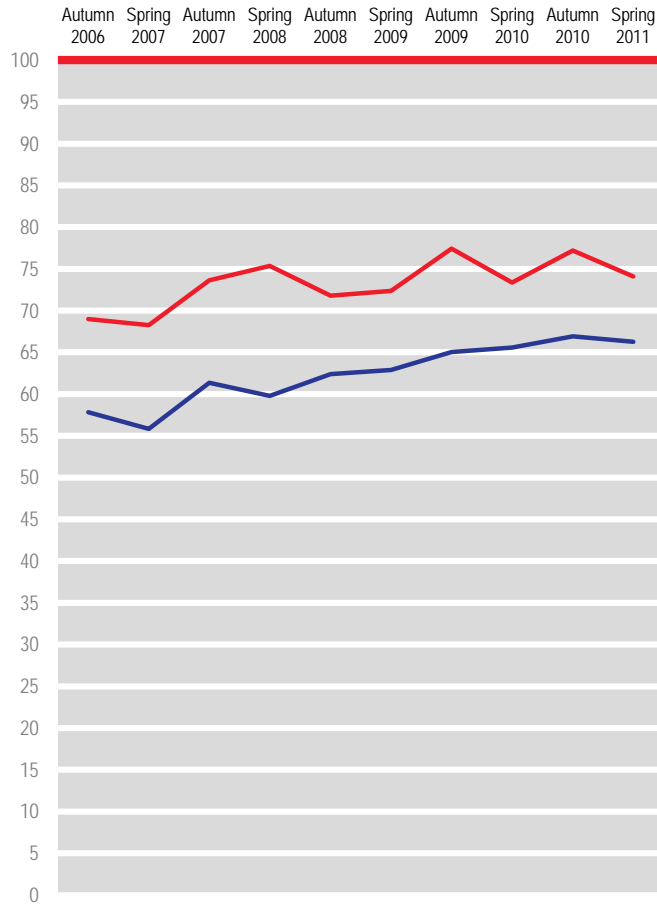
Target 54

Sufficient room for all the passengers to sit/stand

(1159)

Percentage of passengers satisfied 2006 to 2011

— Chiltern Railways — London and South East



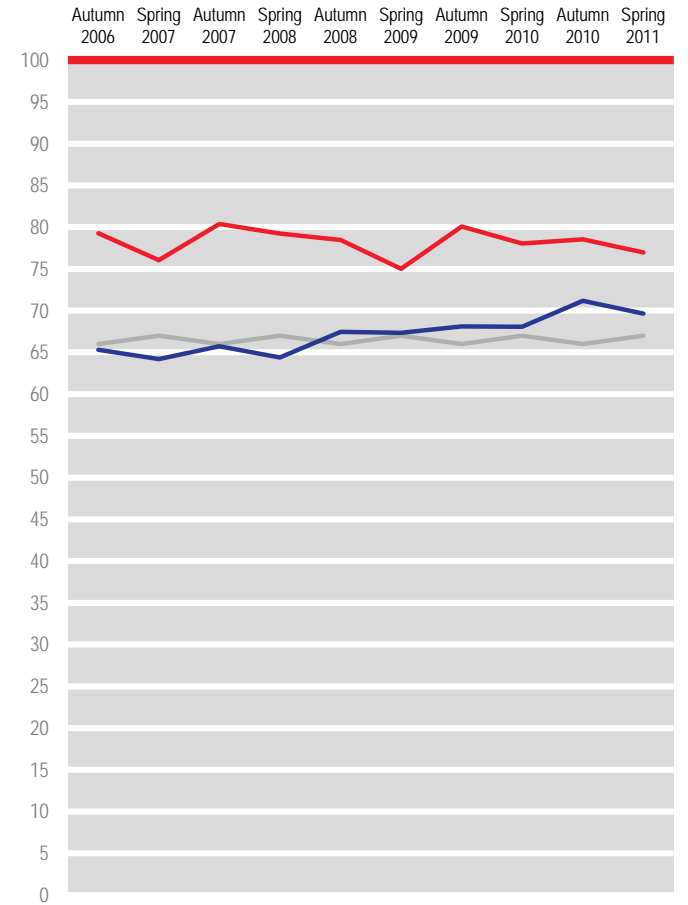
N.B. Benchmarks and targets are only shown for applicable factors

The comfort of the seating area

(1152)

Percentage of passengers satisfied 2006 to 2011

— Chiltern Railways
— London and South East
— Benchmark

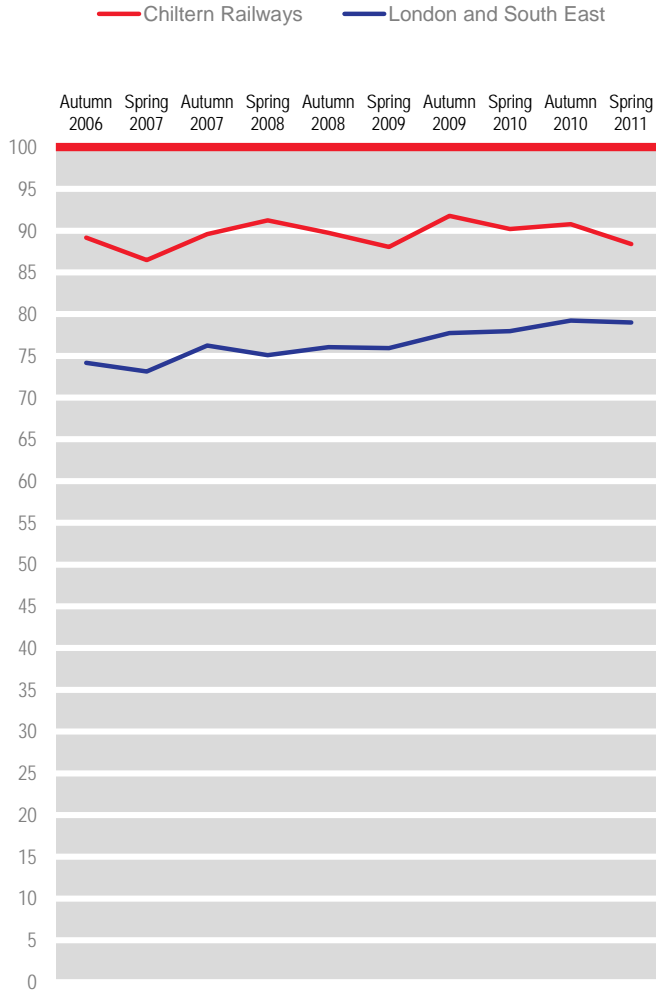


Target 71

The ease of being able to get on and off the train

(1163)

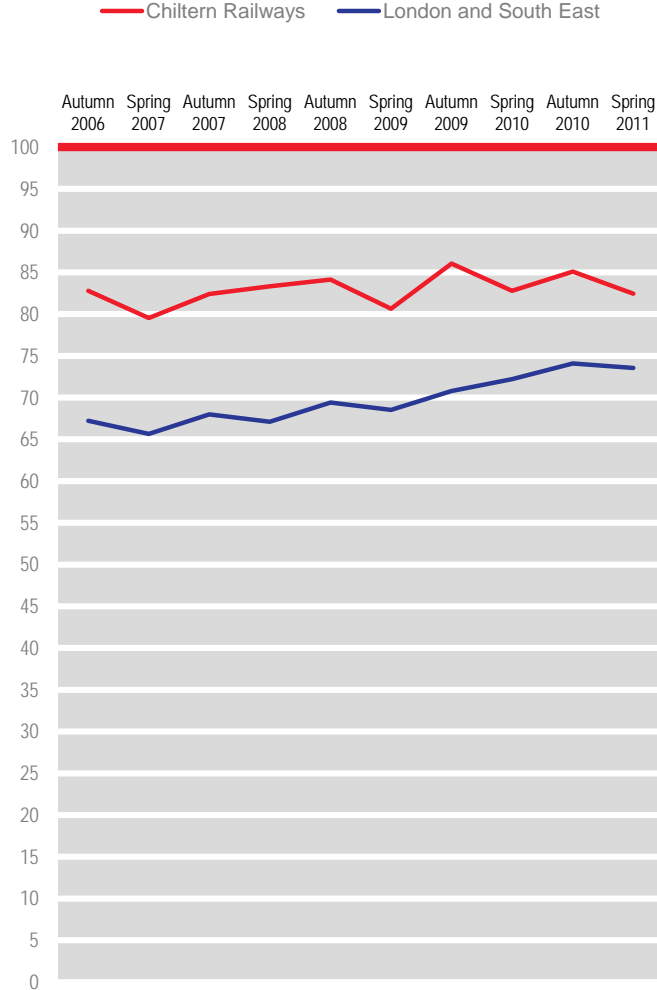
Percentage of passengers satisfied 2006 to 2011



Your personal security whilst on board

(1085)

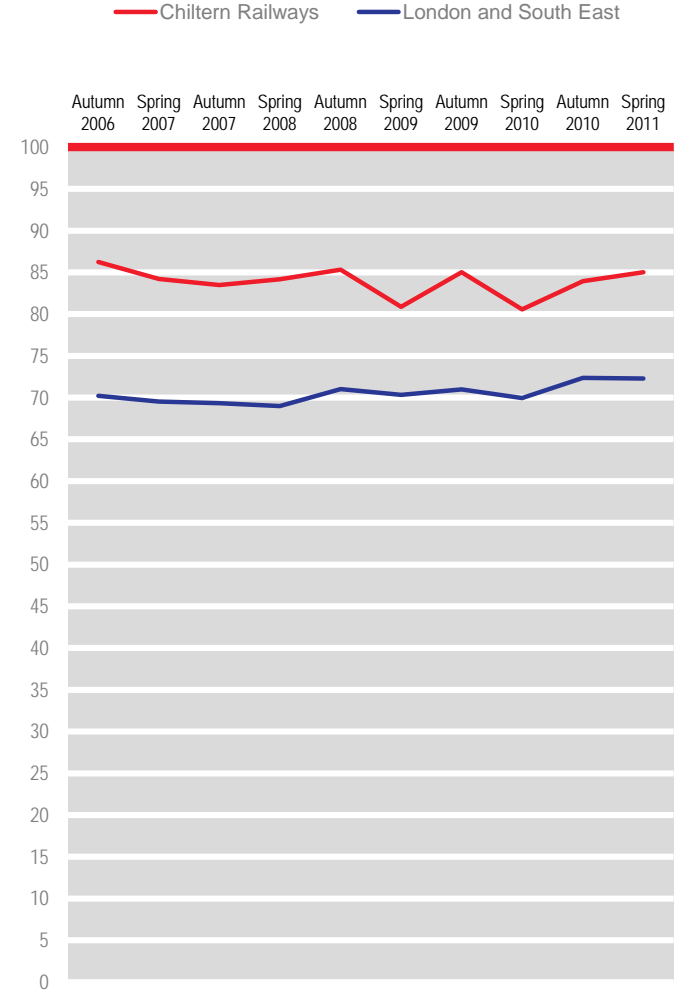
Percentage of passengers satisfied 2006 to 2011



The cleanliness of the inside of the train

(1174)

Percentage of passengers satisfied 2006 to 2011

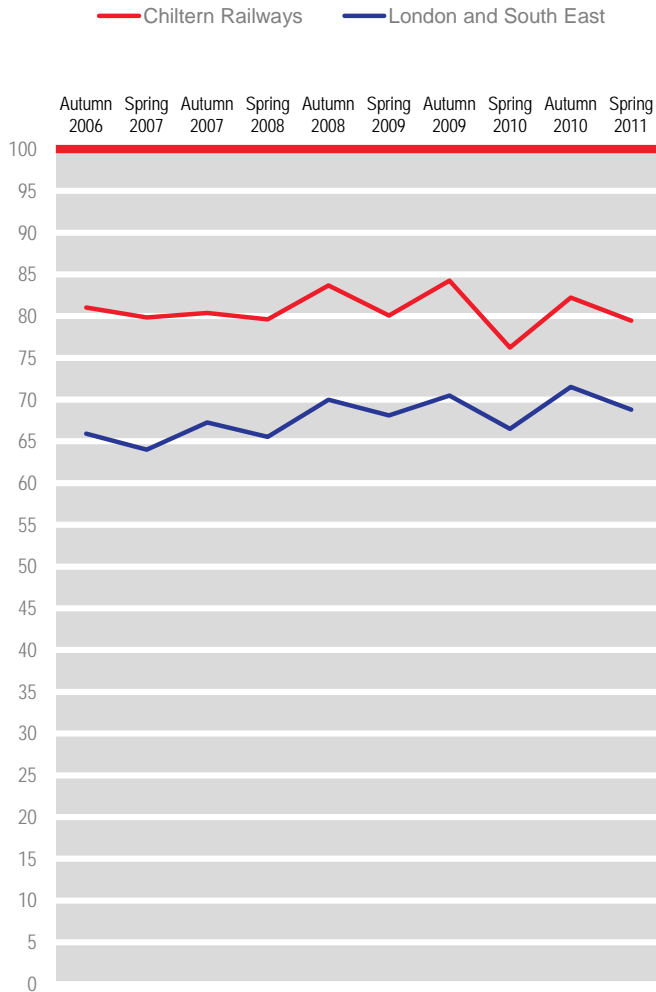


N.B. Benchmarks and targets are only shown for applicable factors

The cleanliness of the outside of the train

(1005)

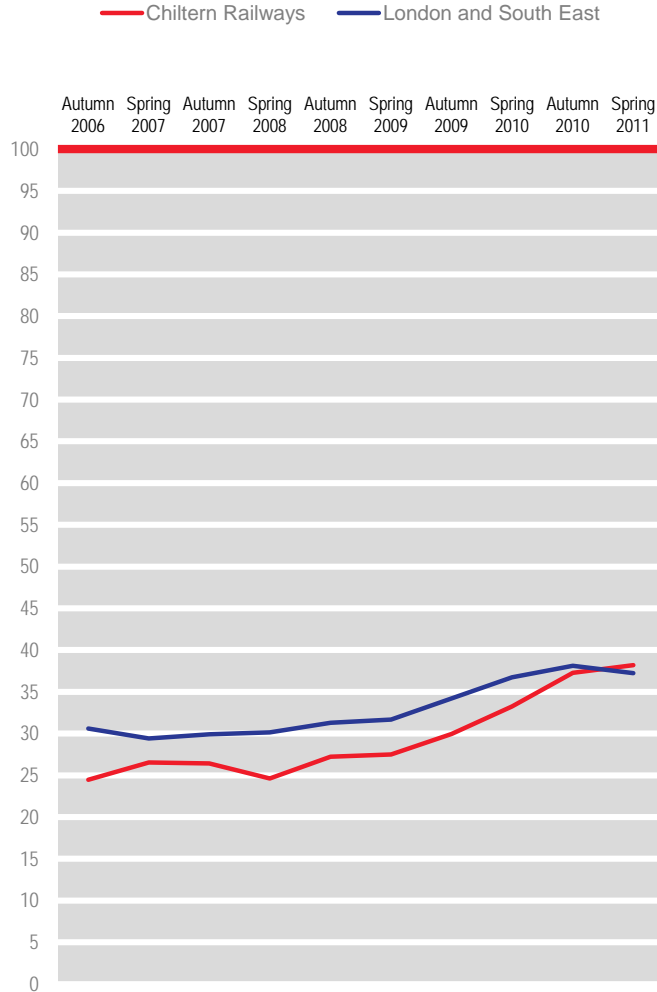
Percentage of passengers satisfied 2006 to 2011



The availability of staff on the train

(658)

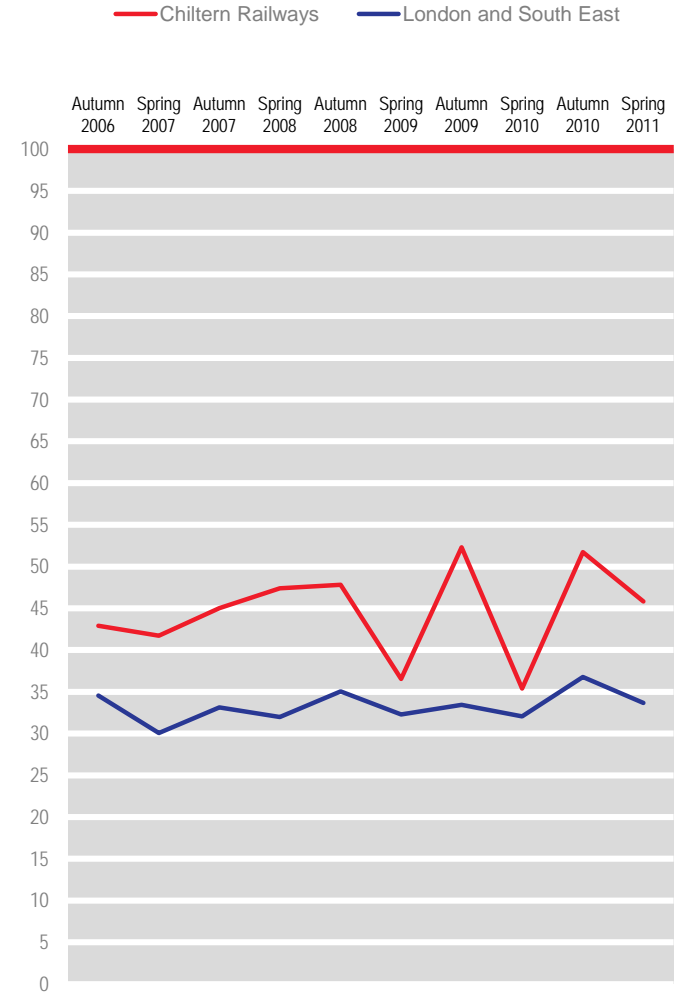
Percentage of passengers satisfied 2006 to 2011



How well train company dealt with delay

(145)

Percentage of passengers satisfied 2006 to 2011



N.B. Benchmarks and targets are only shown for applicable factors

At 95% confidence level:
 + denotes significant increase
 - denotes significant decrease

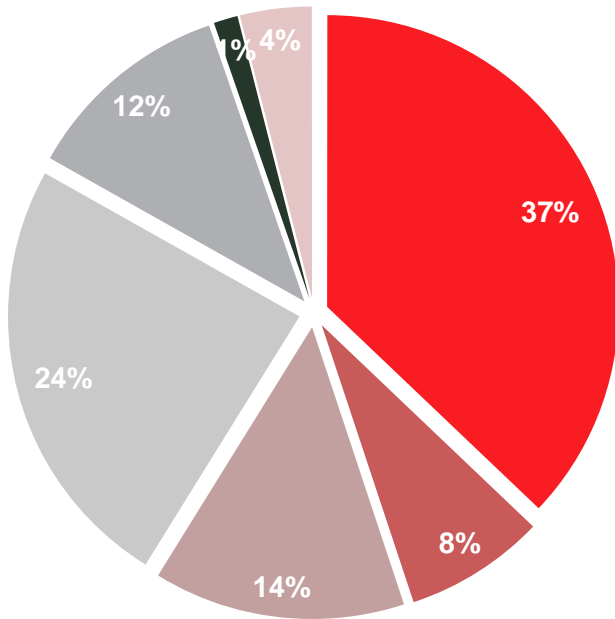
Managed versus non-managed stations for Chiltern Railways

	Stations managed by TOC	significant difference	Stations not managed by TOC
Overall satisfaction with the station	85		83
Ticket buying facilities	81		86
Provision of information about train times/platforms	84	+	74
The upkeep/repair of the station buildings/platforms	78		68
Cleanliness	82	+	72
The facilities and services	64	+	46
The attitudes and helpfulness of the staff	78		81
Connections with other forms of public transport	74		74
Facilities for car parking	66		72
Overall environment	79		71
Your personal security whilst using	77		70
The availability of staff	65		65
How request to station staff was handled	85		92

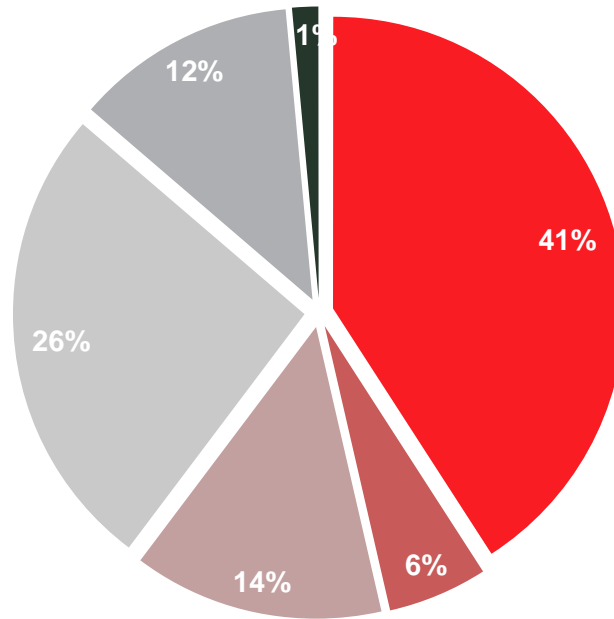
Managed versus non-managed stations for Chiltern Railways

(% Passengers Journeys originating from each type of station)

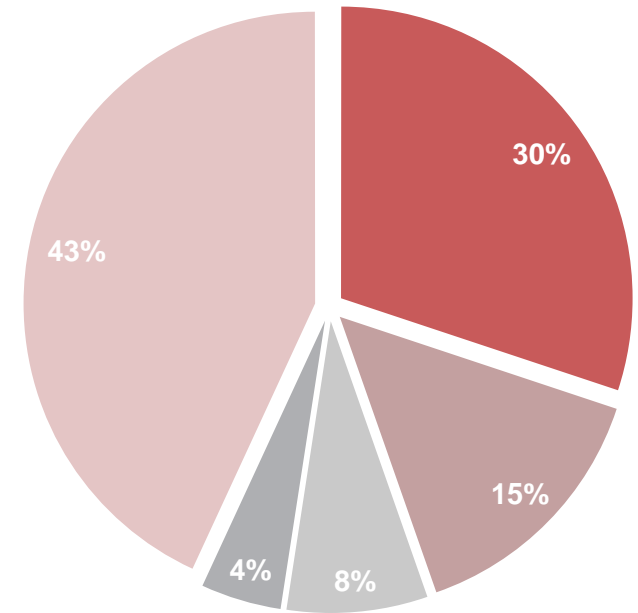
Overall Total



Stations managed by TOC



Stations not managed by TOC



- A = National hub
- B = Regional hub
- C = Important feeder
- D = Medium staffed
- E = Smalled staffed
- F = Small unstaffed
- Not categorised

At 95% confidence level:
 + denotes significant increase
 - denotes significant decrease

Peak/off-peak satisfaction scores for Chiltern Railways

	Peak		Off-Peak			
	Spring 2011	significant change	Spring 2010	Spring 2011	significant change	Spring 2010
Overall satisfaction	85		85	89	-	92
Overall satisfaction with the station	82		-	86		-
Ticket buying facilities	75		80	83		82
Provision of information about train times/platforms	80		85	84		87
The upkeep/repair of the station buildings/platforms	75		76	77		76
Cleanliness	77		79	82		80
The facilities and services	60		65	63		58
The attitudes and helpfulness of the staff	77		77	79		79
Connections with other forms of public transport	60	-	74	78	+	71
Facilities for car parking	63		72	68		71
Overall environment	76		83	79		77
Your personal security whilst using	77		78	76		74
The availability of staff	59		65	67	+	60
How request to station staff was handled	67		72	87		90

* Peak is defined as weekday journeys that arrive at London terminals between 07:00 and 09:59, and those departing between 16:00 and 18:59

At 95% confidence level:
+ denotes significant increase
- denotes significant decrease

Peak/off-peak satisfaction scores for Chiltern Railways

	Peak			Off-Peak		
	Spring 2011	significant change	Spring 2010	Spring 2011	significant change	Spring 2010
The frequency of the trains on that route	79		80	83	-	86
Punctuality/reliability (i.e. the train arriving/departing on time)	82	-	91	90	-	93
The length of time the journey was scheduled to take (speed)	79		85	84	-	89
Connections with other train services	62		74	73		77
The value for money for the price of your ticket	27	-	44	54		57
Cleanliness of the train	86		85	85	+	79
Upkeep and repair of the train	86		84	85		81
The provision of information during the journey	69		69	75		75
The helpfulness and attitude of staff on train	53		59	58		54
The space for luggage	52		48	57		57
The toilet facilities	46		44	57		49
Sufficient room for all passengers to sit/stand	54		47	79		80
The comfort of the seating area	67		65	80		81
The ease of being able to get on and off	82		85	90		92
Your personal security on board	84		84	82		83
The cleanliness of the inside	85		85	85	+	79
The cleanliness of the outside	79		75	80		76
The availability of staff	28		27	40		35
How well train company deals with delays	35		46	49	+	32

* Peak is defined as weekday journeys that arrive at London terminals between 07:00 and 09:59, and those departing between 16:00 and 18:59

Peak/off-peak satisfaction scores for London and South East

	Peak			Off-Peak		
	Spring 2011	significant change	Spring 2010	Spring 2011	significant change	Spring 2010
Overall satisfaction	75		75	85		84
Overall satisfaction with the station	73		-	75		-
Ticket buying facilities	66		65	72		71
Provision of information about train times/platforms	75		76	79	+	77
The upkeep/repair of the station buildings/platforms	60		61	64	+	61
Cleanliness	67		68	70	+	67
The facilities and services	48		49	48		48
The attitudes and helpfulness of the staff	62	-	66	70		69
Connections with other forms of public transport	74		75	74		75
Facilities for car parking	46	+	42	47		47
Overall environment	61		61	64	+	62
Your personal security whilst using	60		62	66	+	64
The availability of staff	51	-	55	57		56
How request to station staff was handled	73		73	84		84

* Peak is defined as weekday journeys that arrive at London terminals between 07:00 and 09:59, and those departing between 16:00 and 18:59

At 95% confidence level:
+ denotes significant increase
- denotes significant decrease

Peak/off-peak satisfaction scores for London and South East

	Peak			Off-Peak		
	Spring 2011	significant change	Spring 2010	Spring 2011	significant change	Spring 2010
The frequency of the trains on that route	73	+	69	77		77
Punctuality/reliability (i.e. the train arriving/departing on time)	73		73	81	-	82
The length of time the journey was scheduled to take (speed)	77		76	85		85
Connections with other train services	71		71	77	+	75
The value for money for the price of your ticket	23	-	29	44	-	47
Cleanliness of the train	68		68	74	+	71
Upkeep and repair of the train	65		65	75	+	73
The provision of information during the journey	61		60	71	+	68
The helpfulness and attitude of staff on train	45		46	60		59
The space for luggage	40		40	55		54
The toilet facilities	24		27	37		36
Sufficient room for all passengers to sit/stand	40		42	73		72
The comfort of the seating area	54		54	74	+	72
The ease of being able to get on and off	69		69	82		81
Your personal security on board	67		67	75		74
The cleanliness of the inside	68		65	74	+	71
The cleanliness of the outside	63		61	70	+	68
The availability of staff	27		26	40		40
How well train company deals with delays	24		25	37		35

* Peak is defined as weekday journeys that arrive at London terminals between 07:00 and 09:59, and those departing between 16:00 and 18:59

Weighted sample profile for Chiltern Railways

Spring 2011
%Spring 2010
%Spring 2011
%Spring 2010
%

	Spring 2011 %	Spring 2010 %		Spring 2011 %	Spring 2010 %
SEX			DELAYS		
Male	47	49	None	85	87
Female	51	48	Minor	12	11
Not stated	2	3	Major	2	1
			Not stated	1	2
AGE			REGULAR TRAVELLER		
16-25	11	10	Yes	60	60
26-34	15	14	No	40	40
35-44	21	20			
45-54	22	23			
55-59	10	10	TIME OF TRAVEL		
60-64	9	10	Peak	20	20
65+	10	12	Off-peak	80	80
Not stated	1	2			
JOURNEY PURPOSE			ASKED FOR HELP OR INFORMATION		
Commuter	35	35	Yes asked for help	11	8
Business	21	21	Yes asked for information	9	8
Leisure	44	44	Could not find anyone to ask	2	2
			No	77	80
			Not stated	1	2

Weighted sample profile for London and South East

Spring 2011
%Spring 2010
%Spring 2011
%Spring 2010
%

	Spring 2011 %	Spring 2010 %		Spring 2011 %	Spring 2010 %
SEX			DELAYS		
Male	44	44	None	81	81
Female	54	53	Minor	16	15
Not stated	2	3	Major	2	2
			Not stated	1	1
AGE			REGULAR TRAVELLER		
16-25	11	10	Yes	70	69
26-34	19	18	No	30	31
35-44	20	21			
45-54	23	22			
55-59	9	9	TIME OF TRAVEL		
60-64	9	8	Peak	21	22
65+	9	9	Off-peak	79	78
Not stated	1	2			
JOURNEY PURPOSE			ASKED FOR HELP OR INFORMATION		
Commuter	52	51	Yes asked for help	8	8
Business	15	16	Yes asked for information	8	8
Leisure	33	33	Could not find anyone to ask	3	3
			No	81	81
			Not stated	1	2

Station sample sizes for Chiltern Railways

Station	Unweighted
London Marylebone	456
High Wycombe	67
Banbury	66
Gerrards Cross	65
Amersham	62
Beaconsfield	61
Leamington Spa	55
Bicester North	42
Haddenham And Thame Parkway	38
Warwick Parkway	37
Great Missenden	36
Aylesbury	28
Warwick	28
Princes Risborough	27
Wendover	23
Birmingham Moor Street	20
Stoke Mandeville	18
Northolt Park	16
Solihull	12
Wembley Stadium	11
Birmingham Snow Hill	11
Dorridge	8
South Ruislip	5
Jewellery Quarter	5
Stratford-Upon-Avon	4
West Ruislip	4

Weighted sample composition for all train companies

	Annual journeys ('000s)	Journey Purpose			Day Of Week		Station Size			
		Commute	Business	Leisure	Weekday	Weekend	Very Large	Large	Medium	Small
Sample size*	30096	12586	4655	12855	26310	3786	8412	6265	7697	7722
Arriva Trains Wales	26420	28	8	64	81	19	27	21	26	26
c2c	32175	66	4	30	93	7	30	17	25	28
Chiltern Railways	17768	35	21	44	80	20	41	8	25	26
CrossCountry	29700	15	28	57	78	22	21	26	26	28
East Coast	17733	13	27	60	79	21	39	13	19	29
East Midlands Trains	22317	23	28	49	82	18	21	23	29	26
First Capital Connect	97672	45	26	29	86	14	20	26	27	27
First Great Western	83870	30	20	50	77	23	21	27	26	26
First TransPennine Express	22295	24	14	62	78	22	20	28	26	27
London Midland	52930	45	14	41	85	15	31	18	25	27
London Overground	67173	64	3	33	83	17	20	26	28	27
Merseyrail	40082	37	8	55	80	20	21	27	25	27
National Express East Anglia	106689	60	17	23	89	11	29	16	26	28
Northern Rail	94518	38	9	53	76	24	23	26	26	25
ScotRail	73238	39	13	47	80	20	28	18	28	26
Southeastern	153264	61	12	27	90	10	16	32	26	26
Southern	162014	50	16	34	90	10	17	33	24	26
South West Trains	190065	53	15	32	85	15	37	18	16	29
Virgin Trains	23172	9	31	60	85	16	32	5	35	28

* Sample size excludes non-franchised Train Operating Companies.

Unweighted sample composition for all train companies

	Sample size	Journey Purpose			Day Of Week		Station Size			
		Commute	Business	Leisure	Weekday	Weekend	Very Large	Large	Medium	Small
Sample size*	30096	12586	4655	12855	26310	3786	8412	6265	7697	7722
Arriva Trains Wales	912	41	9	49	88	12	17	32	30	21
c2c	1199	71	6	23	94	6	27	33	22	18
Chiltern Railways	1205	38	20	42	89	11	43	3	26	28
CrossCountry	1482	33	20	47	83	17	15	29	31	26
East Coast	1522	17	34	49	89	11	44	10	18	28
East Midlands Trains	1404	31	19	49	83	17	31	20	26	24
First Capital Connect	1816	50	14	35	92	8	23	19	32	26
First Great Western	3536	35	18	47	84	16	34	21	24	20
First TransPennine Express	1201	37	18	45	90	10	19	33	21	26
London Midland	1225	49	12	39	92	8	22	26	19	33
London Overground	948	66	6	28	90	10	28	16	25	31
Merseyrail	672	50	5	45	96	4	15	34	24	27
National Express East Anglia	2397	39	12	49	81	19	37	10	26	26
Northern Rail	1250	48	8	44	88	12	32	25	25	17
ScotRail	1166	40	13	47	87	13	29	12	35	23
Southeastern	1930	48	9	43	88	12	17	33	24	25
Southern	2551	49	15	36	89	11	23	25	24	28
South West Trains	2319	47	11	42	88	12	28	17	22	33
Virgin Trains	1361	22	31	47	85	15	29	9	35	27

* Sample size excludes non-franchised Train Operating Companies.

The following reports are produced each wave:

Summary report	Summary tables for all TOCs (including comparison with one year previously), trend tables for last 10 waves by TOC, trend charts for the main NPS factors, peak vs off-peak analysis for LSE TOCs.
TOC reports	Tables and graphs showing results for TOC (including comparisons with one year previously and with relevant sector), trend charts for all factors (including sector and benchmark (if relevant) comparisons), summary profile of passengers surveyed, station sample sizes for TOC and sample composition & weighting.
Stations report	Percentage of passengers satisfied by each main factor for last 10 waves for all stations covered by NPS during that time period.
Consultees report	Summary national trend charts for all main factors, trend charts by age/journey purpose & gender, summary results for leisure/business passengers & commuters, one page for each factor showing national trend and results for all TOCs, Government Office Region charts for each factor and simple tables for some questions that are not included in the main NPS report.
Best in class report	Trend tables showing results for all main factors for all TOCs back to Autumn 1999 (wave 1).
Multivariate report	Multivariate analysis showing drivers of satisfaction and dissatisfaction nationally, by sector and by TOC for latest two NPS waves combined.
Personal security at stations report	Percentage of passengers satisfied and dissatisfied with personal security at all stations that were included in the NPS for the last 10 survey waves.
Rankings report	Results since wave 10 showing satisfaction score for each TOC by factor, significant changes since one year earlier, national rank and rank in TOC type.
Virtual TOC reports	NPS reports for TOCs that used to exist or that are planned to exist in the future (exactly the same format as TOC reports).
Building block report	Summary results showing satisfaction for all building blocks for all main NPS factors.
PTE reports	NPS reports for all PTEs (exactly the same format as TOC reports).
Demographic reports	Simple reports for all TOCs showing demographic profile (and answers to other questions).
Tables report	Quite detailed tables for all TOCs showing results for the majority of NPS questions by gender, age, journey purpose, time of week and whether they were a frequent traveller or not.

Sector definitions

The sector results used in this report contain the following TOCs (non-franchised operators are excluded):

London and South East Operators	Long Distance Operators	Regional Operators
c2c	CrossCountry	Arriva Trains Wales
Chiltern Railways	East Coast	Merseyrail
First Capital Connect	East Midlands Trains	Northern Rail
First Great Western	First TransPennine Express	ScotRail
London Midland	Virgin Trains	
London Overground		
National Express East Anglia		
Southeastern		
Southern		
South West Trains		



Contacts:

David Chilvers
BDRC Continental
Kingsbourne House
229-231 High Holborn
London, WC1V 7DA

Tel: 020 7490 9111
Email: dave.chilvers@bdrc-continental.com

David Greeno
Passenger Focus
1 Drummond Gate
London, SW1V 2QY

Tel: 0300 123 0837
Email: david.greeno@passengerfocus.org.uk

